



COUNTY OF ERIE

MARK C. POLONCARZ

COUNTY EXECUTIVE

November 19, 2025

Mr. Gregory Stevens, Executive Director
Niagara River Greenway Commission,
2136 West Oakfield Road,
Grand Island, New York 14072

Re: Two Mile Creek and Sherwood Trail System Revitalization

Dear Mr. Stevens,

Enclosed is Erie County's submission of the "Two Mile Creek and Sherwood Trail System Revitalization" project for your consultation and review.

This application seeks the Niagara River Greenway Commission's approval and endorsement to help further Erie County's goal of securing funds to improve our waterfront trail system.

We are confident that you will find this project to be consistent with the goals and principles of the Niagara River Greenway Plan.

Thank you for your time and consideration with this matter. Please feel free to contact Mark Rountree, Chief Planner at (716) 858-8008 or mark.rountree@erie.gov should you have any questions.

Sincerely,

A handwritten signature in black ink, reading "Mark Poloncarz", with a long horizontal flourish extending to the right.

Mark C. Poloncarz, Esq.
Erie County Executive

Enclosure

cc. Dan Castle, AICP
Mark Roundtree

Niagara River Greenway Commission Consultation and Review Form

Date of Submittal:

Project Registration Number (*office use only*):

Type of Review Required (please check one):

- ☐ Mandatory Consultation for proposals seeking Greenway Funding
☐ Voluntary Review and/or Endorsement for proposals not seeking Greenway Funding

PROJECT SPONSOR INFORMATION

Name:	
Mailing Address:	
State:	
Zip Code:	
Federal ID#:	
Charities Registration #:	

PROJECT TYPE (Please check only ONE)

- ☐ Trail Development / Improvement ☐ Interpretation / Cultural Monuments
☐ Ecosystem / Riparian Habitat Restoration ☐ Stewardship
☐ Niagara River Greenway Placemaking / Public Access / Wayfinding

FUNDING COMMITTEE

- ☐ Host Community Standing Committee ☐ Ecological Standing Committee
☐ Buffalo and Erie County Standing Committee ☐ State Parks Standing Committee
☐ Unsure at this time / N/A

TOTAL AMOUNT REQUESTED

\$

ADDITIONAL FUNDING FROM OTHER SOURCES

Source	Amount

PROJECT INFORMATION

Project Name:	
Location (include GPS coordinates if possible):	
Project Site Address:	
State:	
Zip Code:	
Minor Civil Division(s):	
County:	
Project Proponent Property Interest (own, lease, easement or other):	

AUTHORIZED OFFICIAL

Name:	
Title:	
Business Address:	
State:	
Zip Code:	
Work Number:	
Cell Number:	
E-Mail Address:	

PROJECT POINT OF CONTACT

Name:	
Title:	
Organization / Firm:	
Business Address:	
State:	
Zip Code:	
Work Number:	
Cell Number:	
E-Mail Address:	

Two Mile Creek/ Sherwood Trail System Revitalization

Erie County Park and Trail System on the Niagara River

Submitted by: Erie County

Prepared by: Erie County Department of Environment and Planning (ECDEP)

For Review and Approval by the Niagara River Greenway Commission

November 19, 2025

Project Name: Two Mile Creek and Sherwood Trail System Revitalization

Project Location: Two Mile Creek Trail and Sherwood Greenway Trail

Minor Civil Division: Town of Tonawanda, County of Erie
City of Tonawanda, County of Erie

Ownership Information: The ownership includes, City of Tonawanda, Niagara Mohawk, Town of Tonawanda, Linde Corporation, Erie County, and the New York State Department of Transportation. Erie County is responsible for capital maintenance of the trail system.

Authorized Official: See Cover Letter, Consultation and Review Form

Point of Contact: See Consultation and Review Form, Point of Contact

Budget Summary: See Project Narrative (3 – Project Budget)

Project Narrative: See Project Narrative

Project Schedule:

Design and Permitting	December 30, 2026
Award of Construction Bid	February 28, 2027
Construction	April - October, 2027

Maps/Figures: See Attachments 1-3

Project Narrative

1) Project Description

Two Mile Creek Trail and Sherwood Greenway Trail (totaling approximately four miles) are connecting trails to the Niagara River Greenway and Shoreline Trail. The trails provide an integral public access ribbon connecting population centers in the Town and City of Tonawanda to the waterfront and the Shoreline Trail regional multi-use trail system. The multi-use trail improves the regional quality of life by connecting population centers to employment centers and recreational opportunities. Constructed between 1996 and 2010, the trail network is in need of repair and revitalization to maintain a safe surface for users and maintain a high-quality user experience.

The project will design, repair, and resurface the existing trails and associated trail elements and amenities including but not limited to signage, benches, trash receptacles, crosswalks, pedestrian signals, retaining walls, removal / replacement of trees, and enhancement of miscellaneous elements of the Two Mile Creek and Sherwood Greenway Trails. The repair of the trail system is anticipated to be a multi-phased project implemented over three to four years. In this phase, the project engineer at a high level will review and rate the condition of the entire corridor, with the poorest rated section being designed for repair or resurfacing as part of this project. Phase 1 is anticipated to include the segment within Veterans Park in the City of Tonawanda but is subject to the engineer's assessment in design.

2) Consistency with the Niagara River Greenway Plan

The proposed project is located within the Niagara River Greenway Focus Area and adjacent areas which connect to the focus areas. According to the *Niagara River Greenway Plan's* criteria, projects in this area "should be elevated" as a priority. The trail system connects population centers to the waterfront.

- **Principles**

- **Excellence** – The Project will improve the Two Mile Creek and Sherwood Greenway Trail to provide a smooth and safe riding surface.
- **Accessibility** – All improvements to the trail network will be ADA-compliant and consistent with applicable standards.
- **Public Well-Being** – As the Plan states, the Greenway was designed to enable access to both active and passive recreational opportunities, promoting physical and emotional wellness. This Project aims to revitalize the Two Mile Creek and Sherwood Greenway public multi-use trails.
- **Connectivity** – The Project will revitalize two popular connecting trails to the waterfront.

- **Restoration** – This Project will restore Two Mile Creek and Sherwood Greenway Trails, both connecting trails to the Niagara River Greenway. The Project Area is adjacent to multiple brownfield properties and will contribute to their restoration by increasing their marketability and connectivity.
 - **Community Based** – The Project revitalizes a popular trail system, connecting communities and population centers to the waterfront.
- **Goals**
 - **Improve Access** – The proposed Project seeks to improve and repair the surface of an existing trail system that connects population centers to the Niagara River waterfront.
 - **Make Connections** – The trail system connects population centers, employment centers and the waterfront. The revitalization of this network will improve connections.
 - **Promote Long-Term Sustainability** – The Project is an investment in an existing asset and resource. The proposed improvements are intended to ensure the long-term viability of the trail system.
 - **Spark Revitalization and Renewal** – The Project will enhance and revitalize the Two Mile Creek and Sherwood Greenway trail systems. The revitalization of these areas will impact a multitude of recreation amenities in the Town and City of Tonawanda by improving waterfront access, promoting tourism, enhancing quality of life, and helping to retain residents.
- **Criteria**
 - **Consistency with Greenway Principles** – The Project is partially within the Niagara River Greenway Focus Area and connects to the Greenway with an inland trail. The enhancement and revitalization of the trail system will help to advance the principles of the *Niagara River Greenway Plan*.
 - **Priority Status** – This Project meets the “priority status” criteria by improving access to waterfront resources and development of an integrated trail and park system.
 - **Focus Area** – According to the Plan, projects close to the Niagara River and within the municipal boundaries of the Greenway should be elevated, as should projects along State-designated trails. The Project is improving a trail system that connects to the Shoreline Trail. The project is within the focus area and adjacent to a focus area.
 - **Matching/Leveraging Funds** – The County has allocated \$75,000 to this project. The County will apply for a Ralph C. Wilson, Jr. Foundation grant in the future.

- **Consideration of Other Planning Efforts** – As detailed in question #4 Local Support of Project, this Project takes into consideration goals, values and visions set forth in many local and regional planning documents. This project implements the recommendations of the Erie County Parks Master Plan and also implements recommendations of the Town of Tonawanda Local Waterfront Revitalization Plan and City of Tonawanda Comprehensive Plan.

3) Project Budget

The Project is expected to be implemented in multiple phases. The initial Phase 1 budget is as follows

Phase 1

<i>Design*</i>	\$150,000
<i>Construction**</i>	\$425,000

**Design cost also includes construction inspection and engineering*

***Construction cost estimate also includes 15% contingency*

Requested \$500,000

Funding

Erie County is providing a \$75,000 match to the grant.

Erie County will be requesting **\$500,000** in funding from the Buffalo and Erie County Greenway Fund Standing Committee. The County will also pursue a Ralph C. Wilson, Jr. Foundation grant for this project.

The Two Mile Creek Trail is part of the Erie County Parks System. Maintenance is performed by the Town and City of Tonawanda based on the location.

4) Local Support of Project

The community and governmental support for the enhancement and revitalization of the trail system is well documented within the *Niagara River Greenway Plan*.

In addition to the *Niagara River Greenway Plan*, this Project advances several other local planning documents:

Erie County Parks Master Plan (Attachment 5)

- On page V3-26, identifies Two Mile Creek Greenway as providing a “key recreational link from the Riverwalk at Niawanda and Isle View Parks to Sheridan Park in Tonawanda.”
- On page V3-45 identifies Two Mile Creek Greenway and Sherwood Greenway as “significant connecting linkage(s) from the adjacent communities to the primary waterfront trail”
- On page V3-74, identifies as a priority “P: 3.0) Basic trail/pathway improvements will be needed in the long-term including trail resurfacing, mileage markers, restriping, and bicycle parking.”
- Recommends facilitating public access and views to the waterfront
- Recommends strengthening connections between Shoreline Trail and nearby Niagara River parks

Town of Tonawanda LWRP (Attachment 6)

- Notes that the Sherwood-Two Mile Creek Greenway “completes a loop trail, and expand(s) the public’s ability to use and enjoy waterfront resources.”
- Discusses Town’s increased focus on waterfront recreational and scenic opportunities

City of Tonawanda Comprehensive Plan (Attachment 7)

- Lists as a Goal to ensure a safe and efficient multi-modal transportation system throughout the City, and states an objective of “Promoting a multi-modal transportation network within the City that is coordinated with neighboring communities and includes non-vehicular accommodations.”

Erie County anticipates cooperation and coordination between representatives from Erie County Department of Environment and Planning; Department of Parks, Recreation and Forestry; and planning and engineering representatives from both the Town and City of Tonawanda. Both affected municipalities are supportive of the project.

5) Environmental Setting

Two Mile Creek Greenway is a paved asphalt pathway, approximately two miles in length, within the City and Town of Tonawanda. The north/south trail can be accessed at the northern end from Isle View and Niawanda Park via the Shoreline Trail, as it travels south along Two Mile Creek through Veterans Memorial Park and parallel to Two Mile Creek Road, meandering along either side of Two Mile Creek. The trail connects to residential communities to the east at Fletcher Street and Brookside Terrace West. The southern end of the pathway ends at East Park Drive just north of I-290, while the trail route continues for approximately 0.5 miles on road, adjacent to the Town golf course to Sheridan Drive.

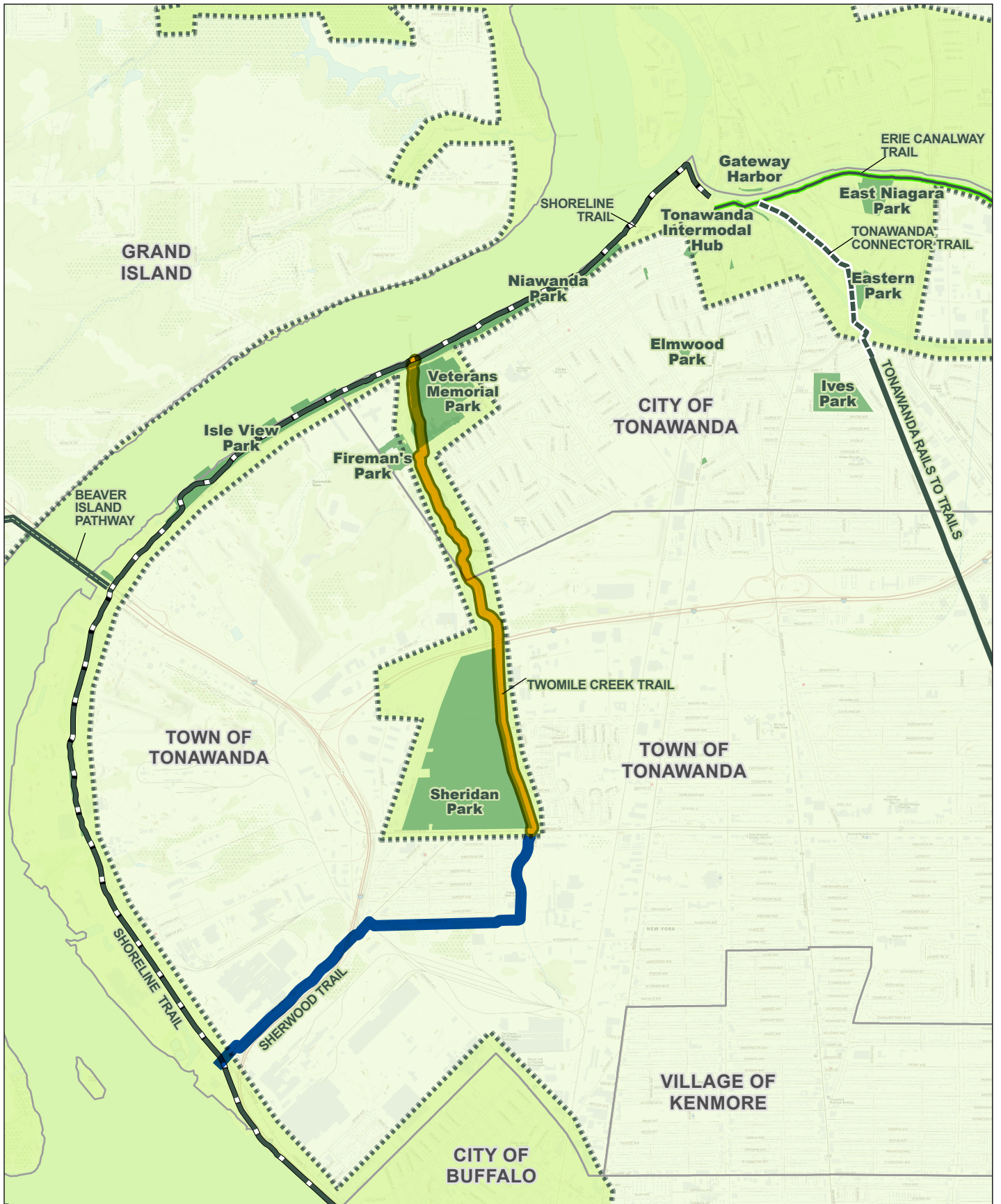
The trail then links with the Sherwood Greenway on the south side of Sheridan Drive, a 1.8-mile section of off-road paved asphalt pathway that extends to the Shoreline Trail at Sheridan Drive.

ATTACHMENT INDEX

1. Project Location (Planimetric) Map
2. Niagara River Greenway Focus Area Map
3. Trails and Parks Map
4. Photographs of Existing Conditions
5. Erie County Parks Master Plan Excerpt
6. Town of Tonawanda LWRP Excerpt
7. City of Tonawanda Comprehensive Plan Excerpt

Attachment 1
Project Location (Planimetric Map)

Attachment 2
Niagara River Greenway Focus Area Map



Sherwood Trail



Two Mile Creek Trail



Park



Niagara River Greenway
Focus Area



Niagara River Greenway

NIAGARA RIVER GREENWAY IN THE VICINITY OF SHERWOOD TRAIL AND TWO MILE CREEK TRAIL

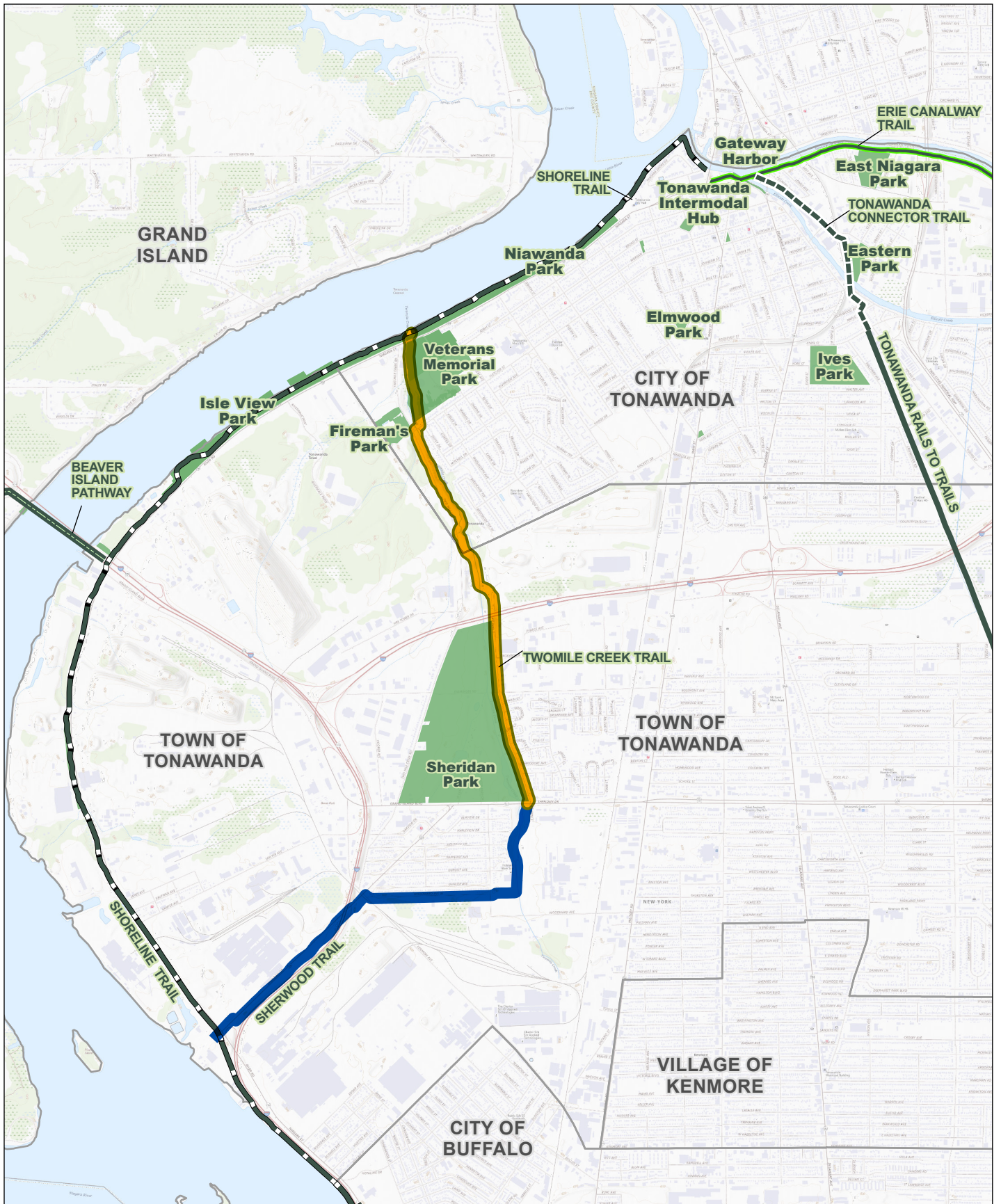
TOWN OF TONAWANDA, ERIE COUNTY, NY




TWO MILE CREEK/SHERWOOD TRAIL SYSTEM REVITALIZATION PROJECT



MAP PREPARED BY THE ERIE COUNTY DEPARTMENT OF
ENVIRONMENT & PLANNING 11/18/2025

Attachment 3
Trails and Parks Map

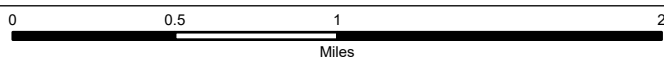


-  Sherwood Trail
-  Two Mile Creek Trail
-  Park

PARKS AND TRAILS IN THE VICINITY OF SHERWOOD TRAIL AND TWO MILE CREEK TRAIL

TOWN OF TONAWANDA, ERIE COUNTY, NY

TWO MILE CREEK/SHERWOOD TRAIL SYSTEM REVITALIZATION PROJECT



MAP PREPARED BY THE ERIE COUNTY DEPARTMENT OF
ENVIRONMENT & PLANNING 11/18/2025

Attachment 4
Photographs of Existing Conditions



Photo 1



Photo 2



Photo 3



Photo 4



Photo 5



Photo 6



Photo 7



Photo 8



Photo 9



Photo 10



Photo 11



Photo 12



Photo 13



Photo 14



Photo 15



Photo 16



Photo 17



Photo 18



Photo 19



Photo 20



Photo 21



Photo 22



Photo 23



Photo 24



Photo 25



Photo 26



Photo 27



Photo 28



Photo 29



Photo 30



Photo 31



Photo 32



Photo 33



Photo 34



Photo 35



Photo 36



Photo 37



Photo 38

Attachment 5
Erie County Parks Master Plan Excerpt

7. SHORELINE TRAIL SYSTEM

Erie County

The Shoreline Trail extends along the Niagara River from the Tonawandas through Buffalo, and currently being constructed in different parts south of the City. Beginning near Tonawanda's Gateway Harbor Park, the Shoreline Trail traverses Niawanda and Isle View Parks before reaching Olmsted's Riverside Park in Buffalo. Continuing south and crossing to Unity Island, the trail continues to Broderick Park and Bird Island Pier before crossing back over the Black Rock Canal, and continuing past or near other key destination waterfront park sites; including Olmsted's Front Park and LaSalle Park. Rest areas include a River overlook near the General Motors facility, and periodic fishing spots along the historic Erie Canal retaining wall. Tow Path Park is a 2.3-acre county-owned facility at the foot of Hertel Avenue that also provides fishing opportunities.

8. NIAWANDA PARK

City of Tonawanda

Niawanda Park is a linear park located along the shore of the Niagara River on the site of the abandoned Erie Canal and Towpath, in the City of Tonawanda. The site connects to the County-owned Isle View Park at the outlet of Two-Mile creek and is primarily used for walking, biking, boat launching, fishing access, and picnicking. The multi-use Riverwalk trail traverses this narrow riverfront property.

9. VETERAN'S MEMORIAL PARK

City of Tonawanda

Veteran's Memorial Park is a large, multi-purpose park located on the banks overlooking the Niagara River in the City of Tonawanda. The site is adjacent to Niawanda Park and Two-Mile Creek, and lies near the north end of the County-owned Isle View Park. The Park is noted for its large trees, playground and picnic facilities, and athletic fields. These park fields are also utilized by the adjacent Tonawanda Jr. /Sr. School.

10. TWO MILE CREEK GREENWAY

Erie County

In 1999, the Two Mile Creek Greenway was completed by the County, providing a key recreational link from the Riverwalk at Niawanda and Isle View Parks to Sheridan Park in Tonawanda. Two Mile Creek connects to the Sherwood Greenway which reconnects back to the Riverwalk at the foot of Sheridan Drive.



View of the Niagara River from the Shoreline Trail



B. TWO MILE CREEK GREENWAY:
CONSTRUCTED / IN USE

This trail linkage, approximately 2 miles in length, is situated along Two Mile Creek through the Town and City of Tonawanda. The south end, approximately 0.5 miles is on-road, adjacent to the Town golf course, with the balance of the trail off-road, meandering along either side of the Creek northward to the Niagara River and the Riverwalk. This Greenway is maintained by the Erie County Parks Department.

The key linkages of this segment include:

- Sheridan Park/Golf Course
- **The Sherwood Greenway**
- Veterans Memorial Park
- Isle View County Park And Riverwalk
- Niawanda Park



Two Mile Creek Greenway

C. SHERWOOD GREENWAY:
CONSTRUCTED / IN USE

This trail linkage is 1.8 mile off- road multi-use recreational pathway that extends the Two Mile Creek Greenway to the Riverwalk at Sheridan Drive.

The key linkages of this segment include:

- Sheridan Park/Golf Course
- **Two Mile Creek Greenway**
- The Riverwalk

D. BEAVER ISLAND BIKE PATH:
CONSTRUCTED / IN USE

This off-road segment runs from the South Grand Island Bridge along South Parkway to Beaver Island State Park. The bike path is approximately 3.5 miles in length. It runs through a residential area of the island providing easy access to Beaver Island State Park. The path connects Grand Island and its parks to the Niagara Riverwalk in the Town of Tonawanda.

The key linkages of this segment include:

- The Riverwalk
- I-190
- Beaver Island State Park

E. WEST RIVER TRAIL:
UNDER CONSTRUCTION

This segment runs approximately 9 miles along the Niagara River from the existing trail at Beaver Island State Park to Buckhorn Island State Park.

The key linkages of this segment include:

- Beaver Island State Park
- Nike Base Park
- Buckhorn Island State Park

F. JESSE KREGAL TRAIL:
CONSTRUCTED / IN USE

This trail linkage connects Delaware Park with Niagara Street and the Riverwalk. The 10' wide asphalt off-road pathway meanders along the north bank of the Scajaquada Creek intersected by two at grade crossings on Grant and Niagara Streets.

The key linkages of this segment include:

- Delaware Park And The Surrounding Cultural Institutions
- Buffalo State College
- Grant/Amherst Community
- Riverwalk

Attachment 6
Town of Tonawanda LWRP Excerpt

In addition, there are several uses along the waterfront which are not water-dependent or water-enhanced, or which do not complement the character that the Town is attempting to establish in this area. Over time, as opportunities are presented, it should be a policy to encourage these uses to relocate and be replaced with more compatible uses.

These recommendations are designed as a guideline for the types of development that are most appropriate for each location. They are not intended to preclude consideration of other types of development that are compatible with the Town's goals for this area and the policies of the LWRP. The intent of these proposed uses is to create a vital, active mix of uses in the waterfront region that are economically sound, promote public access, and improve the visual and physical character of the area.

The revitalization of Tonawanda's waterfront will be a challenge, requiring a long-term commitment and cooperative action on the part of both the public and the private sector. However, there is significant potential to transform key portions of the waterfront into attractive and productive new uses.

D. Proposed Projects

1. Cherry Farm Park

The Town remains committed to implementing the Cherry Farm Park Master Plan, and will continue to take steps to bring this project to fruition. This will increase public access, and implement policy 21A.

2. River Walk- Further Improvements/landscaping

The River Walk has been a successful project which has opened public access along the length of the waterfront in Tonawanda. The Town, in conjunction with the County, is committed to continuing to improve the aesthetics of the trail, and to provide additional spurs and linkages.

3. Sherwood-Two Mile Creek Greenway

The Town, in conjunction with Erie County, is in the process of implementing the Sherwood-Two Mile Creek Greenway. This trail system will extend the existing Two-Mile Creek Trail, extending it through the Praxair property, along Sheridan Drive, and connecting to the Riverwalk at the foot of Sheridan. This will complete a loop trail, and expand the public's ability to use and enjoy waterfront resources.

4. River Road Corridor Improvements

Instituting aesthetic improvements along River Road will improve the visual character of the waterfront region in the Town of Tonawanda. This will require cooperation with landowners and developers, and enforcement on the part of the Town of the standards and requirements provided in the new zoning regulations.

Attachment 7
City of Tonawanda Comprehensive Plan Excerpt

- Ensuring that target businesses provide convenient access for employees and have access to raw materials and markets through multiple modes of transportation.

“HOW WE MOVE” - EFFICIENT TRANSPORTATION (TR)

Goal 5 – Ensure a safe and efficient multi-modal transportation system throughout the City

Transportation issues impact economic development, quality of life and community revitalization. Transportation improvements are needed in certain locations to alleviate traffic congestion or unsafe conditions. There is also support for alternatives to automobile travel, including walking, bicycling and improved public transit opportunities. Objectives to support the goal for efficient transportation include:

- Promoting a multi-modal transportation network within the City that is coordinated with neighboring communities and includes non-vehicular accommodations.
- Coordinating transportation improvements with land use needs.
- Promoting “complete streets” policies when undertaking capital projects and other public transportation improvements.
- Addressing the need for pedestrian safety improvements at critical locations.
- Promoting and improving connectivity and enhancing pedestrian and bicycle accommodations between neighborhoods, the downtown and other areas of commercial activity, and the waterfront.

- Supporting sidewalk maintenance to ensure pedestrian safety.
- Enhancing existing levels of public transportation service and expanding transit opportunities, where feasible.
- Coordinating transportation improvements with surrounding communities, the New York State Department of Transportation (NYSDOT), Erie County, the Niagara Frontier Transportation Authority (NFTA), and the Greater Buffalo Niagara Regional Transportation Council (GBNRTC).
- Continuing roadway maintenance programs, including pavement rehabilitation, curbs and stormwater management systems, where necessary, to ensure the quality and efficacy of the highway system.

COMMUNITY SERVICES AND FACILITIES (CSF)

Goal 6 – Ensure that the facilities and services required by residents and businesses are well-coordinated, high quality, well-maintained and cost effective to support a sustainable community

Community facilities and infrastructure not only contribute to the overall quality-of-life of the City, they enable life-dependent services. As such, they require continued investment and maintenance to remain effective. Further enhancement and the creative reuse of existing assets can provide additional community resources and spur investment opportunities, making the City a desirable location to live, work and play. Objectives to support the goal for quality community services and facilities include: