

Hyde Park Living Shoreline Project

The project was completed in 2017 with support from the Greenway Ecological fund and in partnership with the City of Niagara Falls, LDC Construction Inc, and Applied Ecological Services.

The following improvements were implemented as part of this project:

- New grading to create a gentle slope along the shoreline, improving connectivity between the land and water;
- Creation of diverse habitat types including cattail marsh, woodland glade, meadow, and aquatic;
- Plantings of over 1,300 native plants along the shoreline and in the water to protect the shoreline from erosion, improve water quality by absorbing pollutants and adding oxygen to the water, and providing important habitat for a variety of species; and
- Creation of habitat complexity in the water and along nearshore areas to reduce erosive forces from reaching the shore, and to provide critical resting, spawning, feeding, and nursery habitat for fish, and perching areas for birds. This was achieved through strategic placement of boulders, plants, and woody material.

BEFORE



AFTER



LIVING SHORELINES

HYDE PARK LAKE SHORELINE ENHANCEMENT



Hyde Park Lake: Before Living Shoreline Restoration

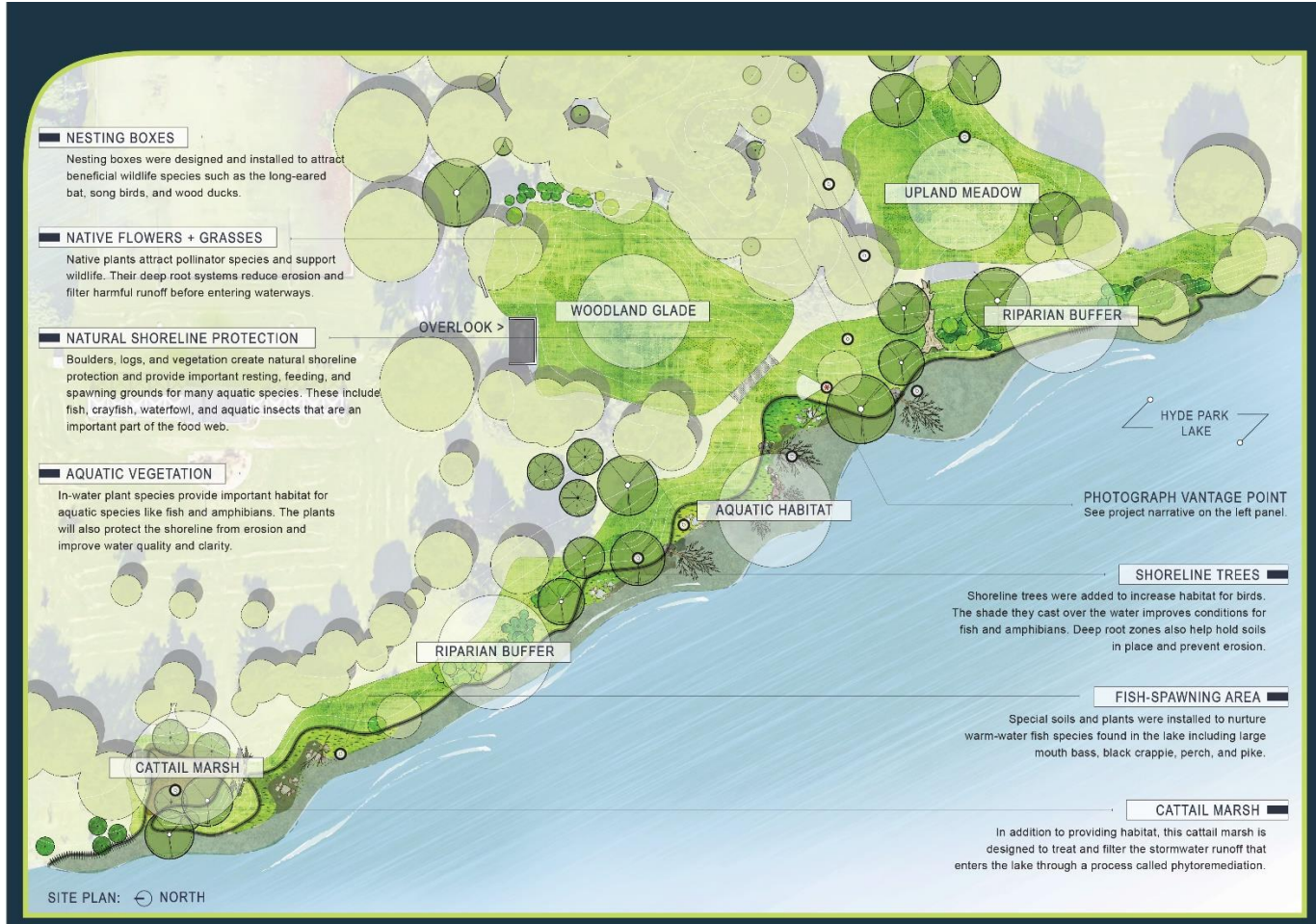
The shoreline you see here today once looked very different. Before this "Living Shoreline" was created, turf lawn and invasive plants dominated the shoreline (seen above). In-water habitat was lacking and poor water quality conditions resulted from bank erosion and untreated stormwater discharging directly into the lake. Shoreline erosion and bank undercutting was caused primarily by wave action and a lack of vegetation.



Hyde Park Lake: Living Shoreline Restoration

Living Shoreline projects remove walls and other barriers, restore gradual slopes, protect shorelines with logs and boulders, and re-establish native plants to create a more natural and seamless transition between land and water. It is estimated that 90% of life found in freshwater ecosystems is born and raised in these vital water-land transition areas. The Living Shoreline here at Hyde Park re-establishes this "ribbon of life" along the water's edge, supporting numerous wildlife species including beaver, waterbirds, fish, amphibians, and beneficial insects. This restored shoreline also provides improved public access and recreational opportunities for park visitors. The photograph above shows the conditions as they were just after construction in December of 2016.

BUFFALO NIAGARA WATERKEEPER®
721 Main Street • Buffalo, New York 14203
(716) 852-7483 • www.bnwaterkeeper.org



PLANT SPECIES LIST: TREES

- SERVICEBERRY
- YELLOW BIRCH
- FLOWERING DOGWOOD
- BEECH
- TAMARACK
- TULIP TREE
- BLACK TUPELO
- SWAMP WHITE OAK
- RED OAK
- BLACK WILLOW
- HEMLOCK
- WHITE PINE

PLANT SPECIES LIST: SHRUBS

- BUTTONBUSH
- SWEET PEPPERBUSH
- GRAY DOGWOOD
- RED OSIER DOGWOOD
- WITCH HAZEL
- VIRGINIA SWEETSPIRE
- SPICEBUSH
- STAGHORN SUMAC
- PUSSY WILLOW
- NANNYBERRY
- CRANBERRYBUSH
- VIBURNUM



This program was supported by the New York Power Authority and the Niagara River Greenway Ecological Standing Committee. For more information please visit bnwaterkeeper.org/livingshoreslines