

PROJECT INFORMATION

Project Name: BUFFALO OLMSTED PARK SYSTEM WAYFINDING AND INTERPRETIVE SIGNAGE PROJECT

Location: BUFFALO OLMSTED PARKS SYSTEM - BUFFALO, NY

Site Address: VARIOUS (SEE SITE MAP)

State: NEW YORK Zip Code: VARIOUS (SEE SITE MAP)

Minor Civil Division(s): BUFFALO

County: ERIE

Project Proponent Property Interest (own, lease, easement or other): MANAGEMENT AND OPERATION - PUBLIC / PRIVATE PARTNERSHIP

AUTHORIZED OFFICIAL

Name: STEPHANIE CROCKATT Title: EXECUTIVE DIRECTOR

Business Address: 84 PARKSIDE AVE

State: NEW YORK Zip Code: 14214

Telephone Number: 716.838.1249 x16 Cell Number: 716.909.5817

Fax Number: 716.835.1300

E-Mail Address: stephanie@bfloparks.org

PROJECT POINT OF CONTACT

Name: BRIAN DOLD Title: DIRECTOR OF PLANNING AND ADVOCACY

Organization/Firm: BUFFALO OLMSTED PARKS CONSERVANCY

Business Address: 84 PARKSIDE AVE

State: NEW YORK Zip Code: 14214

Telephone Number: 716.280.8118 Cell Number: 716.280.8118

Fax Number: 716.835.1300

E-Mail Address: brian@bfloparks.org

Buffalo Olmsted Park and Parkway System

Wayfinding and Interpretive Signage Project

11/19/19

Project Narrative –

The Buffalo Olmsted Park System Wayfinding and Interpretive Signage Project is a comprehensive effort to plan, design and implement mapping and informational signage throughout the entire Olmsted designed park network in the City of Buffalo.

Frederick Law Olmsted, our nation's father of Landscape Architecture, was instrumental in establishing a vision, not only for Buffalo, but for the entire Niagara River corridor, and was influential in saving Niagara Falls and creating the Niagara Reservation (Niagara Falls State Park). Preserving and promoting the Olmsted Legacy is one of the primary principles identified in the Niagara River Greenway Plan and is core to the mission of the Buffalo Olmsted Parks Conservancy (BOPC). The Buffalo Olmsted Park System is a significant historical and cultural asset in Buffalo and the Western New York region, which greatly contributes to the value of the Niagara River Greenway. Wayfinding throughout, and interpretation of, the Buffalo Olmsted Parks System represents a tremendous opportunity to enhance and inform the park user experience along the Niagara River Greenway corridor, and to communicate its value to the residents of Western New York.

The initial purpose of the Buffalo Olmsted Park System Wayfinding and Interpretation Project is to update the existing City of Buffalo (COB) Park System Wayfinding Standards Manual for the Buffalo Olmsted Park System, originally developed in 1998, and in coordination with the Niagara River Greenway (NRG) Wayfinding Standards & Signage Maintenance Manual, as established in 2012.

Created and implemented in the late 90s, the City of Buffalo (COB) Park System Wayfinding Standards Manual included an articulation of how visitors were to be introduced to the Olmsted Parks and how orientation and direction-giving facilitated their access to, and with circulation throughout, the Buffalo Olmsted Parks System. Additionally, the manual established signage and material standards for the City of Buffalo Parks, specifically highlighting the Olmsted Parks with separately distinctive design features. These standards have been implemented throughout the entire City of Buffalo and have created an identity for the City of Buffalo Park System.

In 2012, led by the Erie County Department of Planning, the Niagara River Greenway (NRG) Signage Manual was established, providing significant technical resources for the implementation of comprehensive wayfinding signage. This was to provide more consistent locational information along the Niagara River Greenway and into the various municipalities of the Buffalo-Niagara region.

Through this newly proposed project the BOPC would work with the City of Buffalo to update the COB Wayfinding Standards Manual to complement the NRG Manual for consistent information between City of Buffalo parks and greenway trails.

The prior wayfinding and interpretive signs installed within the Olmsted Parks, while representing only a small percentage of the recommended signage identified in the 1998 COB manual, are now significantly damaged, deteriorated, faded and in need of refurbishment. This proposed project would also assess the condition of existing signage as part of the full implementation of a wayfinding signage plan, and provide maintenance considerations in sustaining the signage materials.

As a focus of this proposed project the Conservancy will develop a comprehensive interpretive plan for the Buffalo Olmsted Park System, identifying the stories, themes, relevant artifacts and source materials. The plan will identify interpretive points of interest for a comprehensive informational signage plan focused not only on the history of the parks but the history of Buffalo, while highlighting the ecological value of this beloved system of green spaces. Coordinated with the interpretive signage plan, components will be integrated between physical and online resources on both the BOPC website and with mobile application technology in order to further interpretive content and public access opportunities.

This project would complete the full implementation of the wayfinding signage network throughout the Buffalo Olmsted Park System. It shall connect the Olmsted parks and parkway system of 850 acres with 83 miles of COB parkways, pathways and trails throughout the city, and with 26 miles of Shoreline Trail from Lake Erie to Lake Ontario.

Principles of the Niagara River Greenway Plan

- Excellence – every project undertaken by the Buffalo Olmsted Parks Conservancy is done with excellence. Within the scope of the project Buffalo Olmsted Parks Conservancy would be securing a professional project team and utilizing only the best in construction materials and methods in completing construction.
- Sustainability / Ecological Integrity – the project would be executed with the agreed upon best practices in managing the landscape. The Buffalo Olmsted Parks Conservancy has a commitment to sustainable practices.
- Accessibility / Connectivity – this project's purpose and impact will be the increased public connectivity throughout the Olmsted Park System and with linkages to the larger Niagara River Greenway system through awareness and wayfinding improvements.
- Public Well-Being – the project is an important investment in a strong working-class community building on many existing environmental and healthy living assets, and ensuring their viability for future generations.

- Restoration – this principle represents the cornerstone of *The Buffalo Olmsted Parks System: Plan for the 21st Century*, as one of the 7 Guiding Principles, and is in the forefront of the Conservancy's mission. This project will enhance awareness of our historic landscapes and enhance future restoration opportunities.
- Authenticity / Celebration – The investment in wayfinding and interpretive signage throughout the Buffalo Olmsted park and parkway system would enhance a celebration of the extensive Olmsted legacy of this region.
- Partnerships/ Community based – In 2018-2019 the BOPC worked extensively with both the City of Buffalo and the local community stakeholders in developing an updated park improvement priorities plan; the Five-Year Plan. Improved wayfinding and interpretive signage was a component identified as a system-wide priority through that public engagement process.

Project Budget:

Planning	\$ 67,200
Construction	\$ 560,000
Acquisition	\$ 0
Administration	\$ 31,400
Operation and Maintenance / Year*	\$ 56,000
TOTAL PROJECT COST	\$ 714,600

** The Buffalo Olmsted Park System is operated and maintained by the BOPC through contractual agreement, by the Buffalo Olmsted Parks Conservancy through the City of Buffalo, however initial maintenance funding is required.*

The Buffalo Olmsted Parks Conservancy's vision for its contribution to the Greenway has been incorporated into the development of the *Buffalo Olmsted Parks System Plan for the 21st Century*. The *21st Century Plan*, published in 2008, looks to place the park system within the green infrastructure of the city, restoring and building off of the assets brought to the region by Joseph Ellicott, Frederick Law Olmsted and the Niagara River.

The 2008 master planning process included 21 meetings of the BOPC Advisory Council, comprised of representatives from a broad-based group of community organizations and park users whose main purpose was to encourage and facilitate public participation in the planning process. During this period six public meetings were held throughout the city as well as 15 meetings of the BOPC Long Range Planning Committee of the Board of Trustees, who approved the master plan.

In 2018-2019 the BOPC undertook an extensive community engagement process to update park improvement priorities of the Plan for the 21st Century; a Five-Year Plan update. This engagement included three rounds of community meetings across five park districts in addition to an online survey responded to by over 1100 residents. The final report, published in November 2019, was fully vetted with the City of Buffalo Department of Public Works and voted with approval/adoption by the BOPC Board of Trustees.

Final design plans will be developed as a part of this project and will be vetted with the City of Buffalo Department of Public Works and the community prior to construction. Following the construction of this signage project the BOPC will continue to engage residents on volunteer projects and other enhancements. The BOPC, as a part of our ongoing role as park stewards, will work through a newly established park-user engagement entity, the Olmsted Community Alliance.

The Buffalo Olmsted Parks System Wayfinding and Interpretive Signage Project will comply with any and all SEQRA regulations relevant to the project. All necessary studies of existing conditions will be a part of the initial technical site analysis phase of the project.

Project Schedule

Spring 2020

- Inventory of all existing signage

Summer 2020

- Development of interpretive themes and research for interpretive plan
- Finalize wayfinding signage plan

Fall 2020

- Begin implementation of the wayfinding signage system per plan

Winter 2020

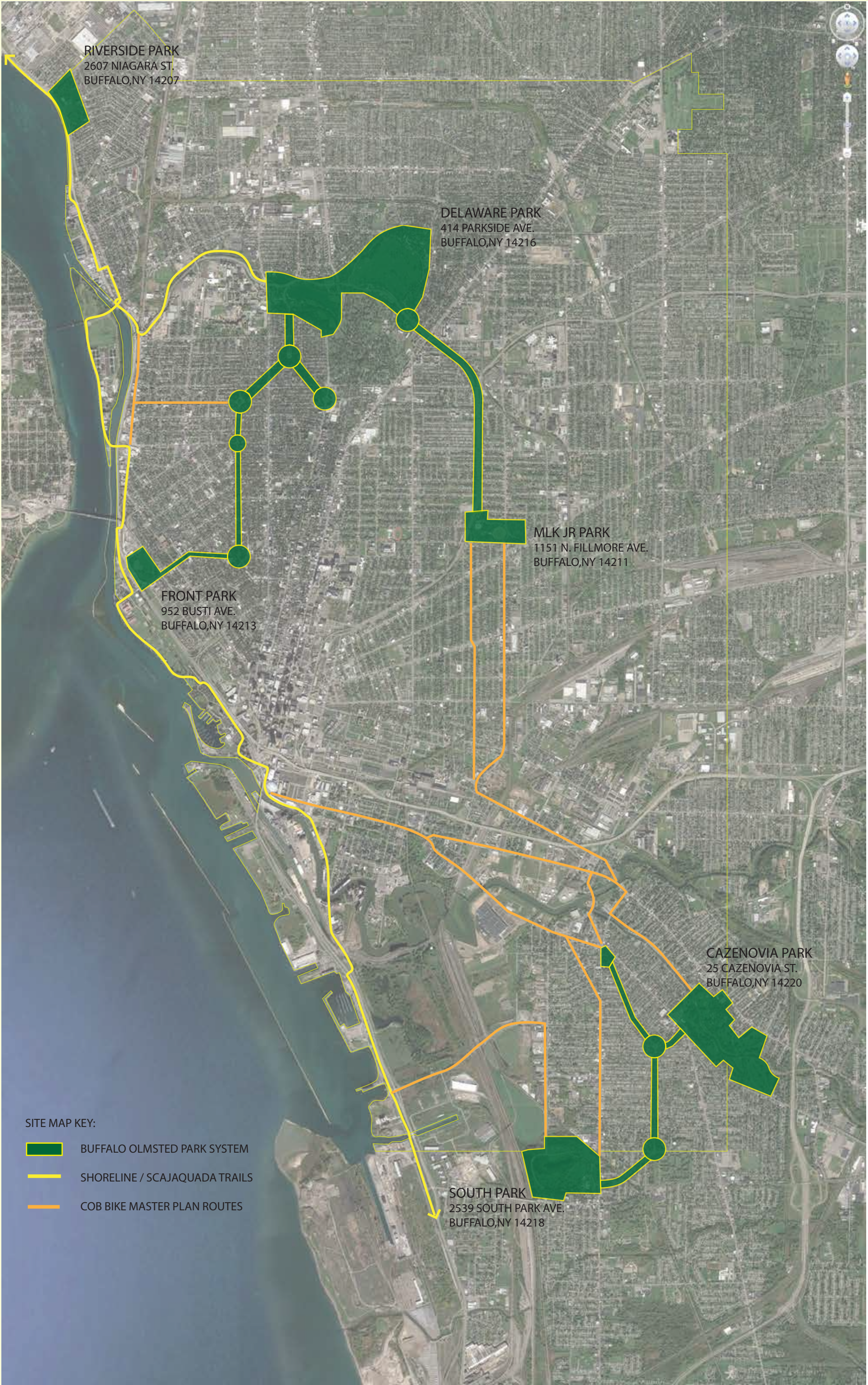
- Finalize interpretive signage plan

Spring 2021

- Continue implementation of wayfinding signage per plan
- Begin implementation of interpretive signage per plan

Summer/Fall 2021

- Complete implementation of wayfinding and interpretive signage per plan
- Complete the maintenance and sustainability plan for the signage system



EXISTING PARK IDENTIFICATION SIGNS

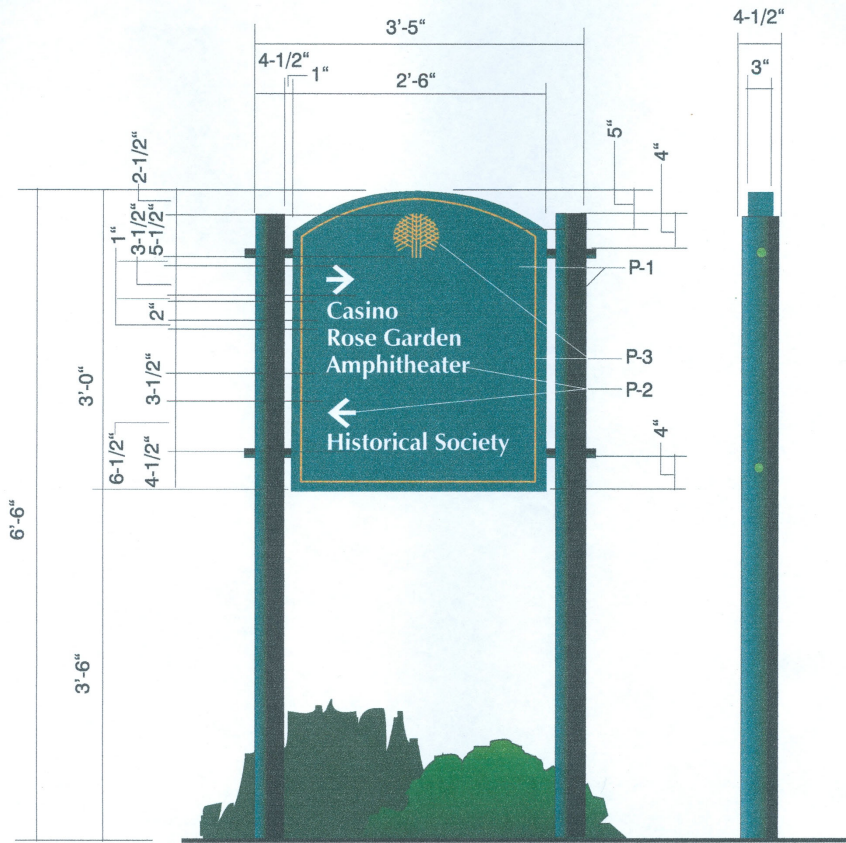


EXISTING PARK WAYFINDING STANDARDS

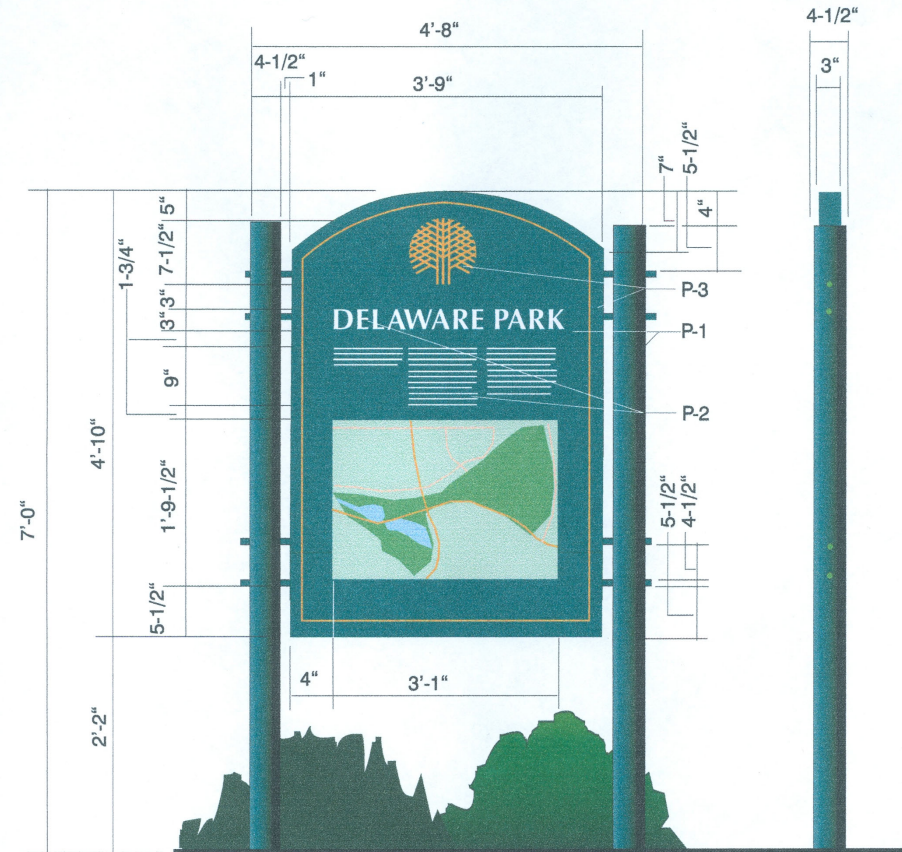


Type A-2 Illuminated Olmsted Park ID	
Buffalo Park System	D-2

EXISTING PARK WAYFINDING STANDARDS



Type B-2 Pedestrian Directional Sign	
Buffalo Park System	D-11



Type C-1 Pedestrian Orientation Signage	
Buffalo Park System	D-20

The Olmsted City

The Buffalo Olmsted Park System:
Plan for the 21st Century



BUFFALO
OLMSTED PARKS
CONSERVANCY

The Olmsted City

The Buffalo Olmsted Park System:
Plan for the 21st Century



BUFFALO
OLMSTED PARKS
CONSERVANCY

Thomas Herrera-Mishler,
CHIEF EXECUTIVE OFFICER
WWW.BUFFALOOLMSTEDPARKS.ORG



Byron W. Brown,
MAYOR
WWW.CITY-BUFFALO.COM



Chris Collins,
COUNTY EXECUTIVE
WWW.ERIE.GOV

January 2008

The Olmsted City

The Buffalo Olmsted Park System: Plan for the 21st Century

Edited by Robert G. Shibley and Lynda H. Schneekloth

DEVELOPED UNDER THE DIRECTION OF:

Buffalo Olmsted Parks Conservancy
City of Buffalo
County of Erie

DEVELOPED WITH THE CONSULTING SUPPORT OF:

The Urban Design Project, University at Buffalo, State University of New York

WITH

Trowbridge and Wolf, Landscape Architects
Wendel Duchscherer, Architects and Engineers

WITH ADDITIONAL SUPPORT FROM:

The Center for Computation Research, University at Buffalo, State University of New York
Greater Buffalo Niagara Regional Transportation Council
Delaware North Companies Parks & Resorts

WITH GENEROUS FUNDING FROM:

The John R. Oishei Foundation

WITH ADDITIONAL FUNDING FROM:

Baird Foundation	Jake Schneider, Schneider Design Architects
Community Foundation for Greater Buffalo	Watson, Bennett, Colligan, Johnson & Schechter, LLP
Former Erie County Legislator Judy Fisher	Margaret L. Wendt Foundation
Paul and Niscah Koessler	City of Buffalo
Erie County Legislator Lynn Marinelli	County of Erie
Corinne and Victor Rice	

On January 31, 2003, the Mayor of Buffalo declared the city to be "The Olmsted City"

FRONT COVER IMAGE:

The White Oak Tree in the Delaware Park Meadow

BACK COVER IMAGE:

The Humboldt Basin in Martin Luther King, Jr. Park from the Buffalo and Erie County Historical Society image collection

The Urban Design Project
School of Architecture and Planning



University at Buffalo
The State University of New York

The Urban Design Project
School of Architecture and Planning
University at Buffalo,
State University of New York
3435 Main Street
Buffalo, NY 14214
(716) 829-3485 ext 218
www.urbandesignproject.org

The System Plan was completed by The Urban Design Project, School of Architecture and Planning, University at Buffalo, under the guidance of the Long Range Planning Committee and the Olmsted Advisory Council of the Buffalo Olmsted Parks Conservancy. The proposed designs build on the history of planning for the parks. Past plans commissioned by the City of Buffalo were supplemented by team and client charrettes and subsequent design development with community input. Cost estimating was done by Wendel Duchscherer, final artist renderings of the park plans were prepared by Trowbridge and Wolf, and system graphics were prepared by The Urban Design Project. All other graphics in the report without sources are from The Urban Design Project or the Buffalo Olmsted Parks Conservancy.

—RESTORATION PLAN— DELAWARE PARK

RECONNECT THE FRAGMENTS OF THE PARK

Project #1: Support and participate in the upgrade of the Scajaquada Expressway to a parkway

RESTORE THE HISTORIC INTEGRITY OF THE PARK FROM THE PERIOD OF SIGNIFICANCE

- Project #2: Restore the Meadow
- Project #3: Reconstruct the Ring Road considering its historic alignment
- Project #4: Restore the Lodge area
- Project #5: Restore the Casino area
- Project #6: Restore the Rumsey Woods area

RESTORE GALA WATER AND OTHER WATER FEATURES

- Project #7: Restore or interpret the original shoreline configuration and redesign the path around Gala Water (Hoyt Lake) to reflect the new shape
- Project #8: Construct a wetland to improve water quality at the junction of Hoyt Lake and Scajaquada Creek

IMPROVE OR RATIONALIZE RECREATION AND SERVICES

- Project #9: Enhance the playgrounds
- Project #10: Reposition the baseball diamonds and rotate athletic fields
- Project #11: Provide water based recreation opportunities on Hoyt Lake
- Project #12: Remove the tennis courts along the Scajaquada Expressway (in the southern part of the Meadow) and improve other tennis courts in the park

IMPROVE ACCESS AND CIRCULATION WITHIN THE PARK FOR VEHICLES AND PEDESTRIANS

- Project #13: Improve connections to cultural activities within the park

ESTABLISH CONNECTIONS TO AREAS SURROUNDING THE PARK

- *Project #14: Connect the park's perimeter to the surrounding neighborhood
- *Project #15: Highlight the park's connections to the "Olmsted Crescent" of cultural activities
- *Project #16: Explore opportunities to connect Delaware Park to Forest Lawn Cemetery
- *Project #17: Connect the park to the Niagara River Greenway
- *Project #18: Restore park perimeter roads to create more of a park-like setting in the surrounding neighborhoods

RESTORE THE BASIC PARK ELEMENTS

- *Project #19: Restore the park's historic furnishings
- *Project #20: Identify areas in need of lighting; design and install lighting
- *Project #21: Restore and maintain public restroom facilities
- *Project #22: Restore, maintain, or install drinking fountains
- *Project #23: Rehabilitate Olmsted pathway system
- *Project #24: Rehabilitate Olmsted roadway system
- *Project #25: Introduce traffic calming measures at park roads
- *Project #26: Install appropriate wayfinding and branding signage**
- *Project #27: Restore historic landscape patterns and plantings, especially perimeter vegetation
- *Project #28: Manage drainage and erosion issues throughout the park

*These projects are not numbered on the map.



BUFFALO, NY



ERIE COUNTY

—RESTORATION PLAN— FRONT PARK

RESTORE THE HISTORIC INTEGRITY OF THE PARK FROM THE PERIOD OF SIGNIFICANCE

- Project #1: Restore the Terrace
- Project #2: Rebuild Lakeview House
- Project #3: Restore the Playground/
Hippodrome
- Project #4: Restore the Picnic Shelter

RESTORE THE PARK'S CONNECTION TO THE WATER

- Project #5: Construct an earthen berm or other barrier between the park and the thruway
- Project #6: Construct site walls to reclaim views

IMPROVE OR RATIONALIZE RECREATION AND SERVICES

- Project #7: Remove ice rink and restore original grading
- Project #8: Relocate the tennis courts to locations outside of the park
- Project #9: Relocate the children's playground to the northern edge of the park, closer to the residential neighborhoods

RESTORE AND ENHANCE THE PARK'S GATEWAYS AND EDGES

- Project #10: Restore historic park entrance at Porter and Busti Avenues

ESTABLISH CONNECTIONS TO AREAS SURROUNDING THE PARK

- *Project #11: Restore connections between Front Park and the rest of the park system
- Project #12: Reinterpret Fort Porter
- Project #13: Recreate Sheridan Drive along the southwest border of the park
- Project #14: Restore or interpret "The Bank" designed by Olmsted, depending on the final design of the Peace Bridge Plaza
- *Project #15: Restore park perimeter roads to create more of a park-like setting in the surrounding neighborhoods

RESTORE THE BASIC PARK ELEMENTS

- *Project #16: Restore the park's historic furnishings
- *Project #17: Identify areas in need of lighting; design and install lighting
- *Project #18: Restore and maintain public restroom facilities
- *Project #19: Restore, maintain, or install drinking fountains
- *Project #20: Rehabilitate Olmsted pathway system
- *Project #21: Rehabilitate Olmsted roadway system
- *Project #22: Introduce traffic calming measures at park roads
- *Project #23: Install appropriate wayfinding and branding signage
- *Project #24: Restore historic landscape patterns and plantings, especially perimeter vegetation
- *Project #25: Manage drainage and erosion issues throughout the park



BUFFALO, NY



ERIE COUNTY

*These projects are not numbered on the map.
As of 1-28-08 there has been no determination of the Peace Bridge Plaza location or design.

—RESTORATION PLAN—

MARTIN LUTHER KING, JR. PARK

RESTORE THE HISTORIC INTEGRITY OF THE PARK FROM THE PERIOD OF SIGNIFICANCE

- Project #1: Renovate and enhance the Casino building
- Project #2: Restore the Humboldt Basin
- Project #3: Restore the original Fountain as a splash pad
- Project #4: Restore the Lily Pool
- Project #5: Improve the historic Greenhouse area
- Project #6: Restore Picnic Grove

ESTABLISH THE MARTIN LUTHER KING, JR. MONUMENT AS A FOCAL POINT FOR THE PARK

- Project #7: Redesign the Martin Luther King, Jr. Memorial within the loop area

IMPROVE ACCESS AND CIRCULATION WITHIN THE PARK FOR VEHICLES AND PEDESTRIANS

- Project #8: Redesign the south Ring Road as a pedestrian pathway and relocate parking to Best Street
- Project #9: Install traffic calming and streetscape features on Fillmore Avenue
- Project #10: Redesign the southwest entrance of the park
- Project #11: Redesign the southeast entrance of the park

IMPROVE OR RATIONALIZE RECREATION AND SERVICES

- Project #12: Consolidate and improve the playground on the south side of the park near the Humboldt Basin
- Project #13: Relocate the basketball courts and arena outside of the park
- Project #14: Relocate the tennis courts outside of the park

REESTABLISH PARK ELEMENTS SURROUNDING THE SCIENCE MUSEUM AND SCHOOL

- Project #15: Interpret the remnant of the historical Humboldt Parkway at the former north entrance of the park

- Project #16: Rationalize and expand parking for the Museum and park users within and outside of the park
- Project #17: Redesign the school bus drop-off area to articulate the park road
- Project #18: Redesign the Rose Garden near the Science Museum

ESTABLISH CONNECTIONS TO AREAS SURROUNDING THE PARK

- Project #19: Design a circle at Best Street near the Kensington Expressway
- Project #20: Redesign the Best Street/Genesee Street intersection
- Project #21: Open West Parade to two-way traffic
- Project #22: Widen the sidewalks and add a vegetative buffer to the bridges that cross the Kensington Expressway
- Project #23: Deck over the section of the expressway by the park
- *Project #24: Restore park perimeter roads to create more of a park-like setting in the surrounding neighborhoods

RESTORE THE BASIC PARK ELEMENTS

- *Project #25: Restore the park's historic furnishings
- *Project #26: Identify areas in need of lighting; design and install lighting
- *Project #27: Restore and maintain public restroom facilities
- *Project #28: Restore, maintain, or install drinking fountains
- *Project #29: Rehabilitate Olmsted pathway system
- *Project #30: Rehabilitate Olmsted roadway system
- *Project #31: Introduce traffic calming measures at park roads
- *Project #32: Install appropriate wayfinding and branding signage
- *Project #33: Restore historic landscape patterns and plantings, especially perimeter vegetation
- *Project #34: Manage drainage and erosion issues throughout the park

*These projects are not numbered on the map.



BUFFALO, NY



ERIE COUNTY

—RESTORATION PLAN— SOUTH PARK

RESTORE THE HISTORIC INTEGRITY OF THE PARK FROM THE PERIOD OF SIGNIFICANCE

- Project #1: Enhance the Arboretum and botanical collection around the Conservatory
- Project #2: Repair the lake and improve water quality
- Project #3: Restore the Meadow

IMPROVE ACCESS AND CIRCULATION WITHIN THE PARK FOR VEHICLES AND PEDESTRIANS

- Project #4: Repair the Ring Road
- Project #5: Replace the bridge
- Project #6: Discourage local traffic from using the park as a thoroughfare

RESTORE AND ENHANCE THE PARK'S GATEWAYS AND EDGES

- Project #7: Articulate the park's main entrance as a major gateway
- Project #8: Enhance the park's southwest entrance for pedestrians
- Project #9: Create a 'Father Baker Garden' where the unused bus loop is located

RATIONALIZE PARK FACILITIES AND STRUCTURES

- Project #10: Construct the Boathouse
- Project #11: Enhance the appearance and utility of the concession structure

ESTABLISH CONNECTIONS TO AREAS SURROUNDING THE PARK

- *Project #12: Integrate South Park with surrounding urban Lackawanna neighborhood
- *Project #13: Connect South Park to the Greenway through trails along Ridge Road
- *Project #14: Connect South Park to Tiffet Street and the Tiffet Nature Preserve
- *Project #15: Restore park perimeter roads to create more of a park-like setting in the surrounding neighborhoods

RESTORE THE BASIC PARK ELEMENTS

- *Project #16: Restore the park's historic furnishings
- *Project #17: Identify areas in need of lighting; design and install lighting
- *Project #18: Restore and maintain public restroom facilities
- *Project #19: Restore, maintain, or install drinking fountains
- *Project #20: Rehabilitate Olmsted pathway system
- *Project #21: Rehabilitate Olmsted roadway system
- *Project #22: Introduce traffic calming measures at park roads
- *Project #23: Install appropriate wayfinding and branding signage
- *Project #24: Restore historic landscape patterns and plantings, especially perimeter vegetation
- *Project #25: Manage drainage and erosion issues throughout the park



BUFFALO, NY



ERIE COUNTY

*These projects are not numbered on the map.

—RESTORATION PLAN— CAZENOVIA PARK

RESTORE THE HISTORIC INTEGRITY OF THE PARK FROM THE PERIOD OF SIGNIFICANCE

Project #1: Renovate the Casino and the central Concourse

IMPROVE ACCESS AND CIRCULATION IN THE PARK FOR VEHICLES AND PEDESTRIANS

- Project #2: Remove parking and access road along the creek on south side of the park and provide new residential access from Potters Road
- Project #3: Construct a pedestrian bridge over Cazenovia Creek
- Project #4: Improve the pedestrian connection between the original park and its newer section

RESTORE AND ENHANCE THE PARK'S GATEWAYS AND EDGES

- Project #5: Restore the park's south entrance connecting to Red Jacket Parkway
- Project #6: Create an enhanced 'parking garden' at the entrance at Seneca Street

PROTECT AND ENHANCE CAZENOVIA CREEK AND DEVELOP ECOLOGICAL AND SUSTAINABLE SYSTEMS FOR MANAGING FLOODS AND STORMWATER

- Project #7: Stabilize the creek beds and shoreline to prevent erosion and to manage points of access
- Project #8: Develop overflow areas along the creek to absorb more flood waters
- Project #9: Reinterpret the former lake edge behind the Casino

IMPROVE OR RATIONALIZE RECREATION AND SERVICES

- Project #10: Improve sports fields as required
- Project #11: Relocate non-historic facilities out of the historic section of the park

ESTABLISH CONNECTIONS TO AREAS SURROUNDING THE PARK

- *Project #12: Connect Cazenovia Park's perimeter to the surrounding neighborhood
- *Project #13: Connect Cazenovia Park to the Niagara River Greenway system
- *Project #14: Restore park perimeter roads to create more of a park-like setting in the surrounding neighborhoods

RESTORE THE BASIC PARK ELEMENTS

- *Project #15: Restore the park's historic furnishings
- *Project #16: Identify areas in need of lighting; design and install lighting
- *Project #17: Restore and maintain public restroom facilities
- *Project #18: Restore, maintain, or install drinking fountains
- *Project #19: Rehabilitate Olmsted pathway system
- *Project #20: Rehabilitate Olmsted roadway system
- *Project #21: Introduce traffic calming measures at park roads
- *Project #22: Install appropriate wayfinding and branding signage**
- *Project #23: Restore historic landscape patterns and plantings, especially perimeter vegetation
- *Project #24: Manage drainage and erosion issues throughout the park



BUFFALO, NY



ERIE COUNTY

*These projects are not numbered on the map.

—RESTORATION PLAN— RIVERSIDE PARK

RESTORE THE HISTORIC INTEGRITY OF THE PARK FROM THE PERIOD OF SIGNIFICANCE

- Project #1: Reestablish the central Concourse
- Project #2: Reinterpret the Minnow Pools

REESTABLISH THE VISUAL AND PHYSICAL CONNECTION BETWEEN RIVERSIDE PARK AND THE NIAGARA RIVER

- Project #3: Relocate and redesign the pedestrian bridge on its historic alignment
- Project #4: Establish a pier on the Niagara River where the new pedestrian bridge lands

IMPROVE ACCESS AND CIRCULATION IN THE PARK FOR VEHICLES AND PEDESTRIANS

- Project #5: Reconstruct Hotaling Drive
- Project #6: Improve parking along Crowley Avenue

IMPROVE OR RATIONALIZE RECREATION AND SERVICES

- Project #7: Improve existing playground
- Project #8: Rationalize and improve existing sports fields
- Project #9: Relocate senior center, swimming pool, and ice rink facilities

INTEGRATE THE ORIGINAL OLMSTED PARK WITH THE SOUTH PORTION OF PARK

- Project #10: Enhance connections between the original Olmsted park and the newer section of the park

ESTABLISH CONNECTIONS TO AREAS SURROUNDING THE PARK

- *Project #11: Develop safe connections between Riverside Park and the adjacent neighborhoods
- *Project #12: Extend the park connections to the Niagara River Greenway and Washington and Towpath Parks
- *Project #13: Restore park perimeter roads to create more of a park-like setting in the surrounding neighborhoods

RESTORE THE BASIC PARK ELEMENTS

- *Project #14: Restore the park's historic furnishings
- *Project #15: Identify areas in need of lighting; design and install lighting
- *Project #16: Restore and maintain public restroom facilities
- *Project #17: Restore, maintain, or install drinking fountains
- *Project #18: Rehabilitate Olmsted pathway system
- *Project #19: Rehabilitate Olmsted roadway system
- *Project #20: Introduce traffic calming measures at park roads
- *Project #21: Install appropriate wayfinding and branding signage
- *Project #22: Restore historic landscape patterns and plantings, especially perimeter vegetation
- *Project #23: Manage drainage and erosion issues throughout the park

*These projects are not numbered on the map.



BUFFALO, NY



ERIE COUNTY



The Olmsted City

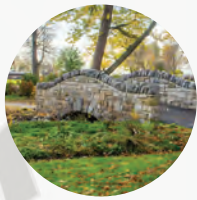
FIVE YEAR PLAN

2020 – 2024

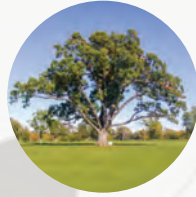
PRIORITIES FOR BUFFALO'S
OLMSTED PARK SYSTEM



BUFFALO
OLMSTED PARKS
CONSERVANCY



Riverside Park



Delaware Park



Front Park



MLK Jr. Park



Cazenovia Park



South Park

CANADA

Niagara River

Lake Erie

Niagara Street
I-190

Rte 198

Lincoln Parkway

Bidwell Parkway

Colonial Circle

Richmond Avenue

Porter Avenue

Prospect and
Columbus Park

Niagara Street
I-190

Downtown Buffalo

Buffalo River
Rte 5

Delaware Avenue

Agassiz Circle

Soldiers Circle

Chapin Parkway

Gates Circle

Ferry Circle

Symphony Circle

Days Park

North Street

Rte 33

Main Street

Rte 33

Boiley Avenue

Genesee Street

Broadway

William Street

Clinton Street

South Park Avenue

Heacock Place

McClellan
Circle

Red Jacket
Parkway

McKinley
Parkway

McKinley
Circle

N



SYSTEM MAP LEGEND

- Olmsted Circle
- Olmsted Parkway
- ▲ Olmsted Pocket Park

The Olmsted City **FIVE
YEAR
PLAN**
2020 – 2024

**PRIORITIES FOR BUFFALO'S
OLMSTED PARK SYSTEM**

Developed with the consulting support of:



With generous funding from:



In partnership with:



MAYOR BYRON W. BROWN

October 2019

*Cover photo by Christopher Hyzy, featuring an aerial view of
Soldiers Circle and Bidwell, Chapin and Lincoln Parkways*



Systemwide Projects Based on C.A.R.E.S.



Comfort

Keywords: Park benches,
Picnic tables, Relaxation

Park Furnishings | Over the last 10 years, through capital projects and the Conservancy's commemorative bench program, a significant number of park benches have been added to the Olmsted parks. However, several parks were identified as deficient in the number of park benches

and picnic tables available for park use. The addition of benches, picnic tables and other park furnishings to the landscape will be a systemwide priority over the next five years, with a concerted focus identified for Riverside, MLK Jr., Cazenovia and South Parks.

Access

Keywords: Signage, Wayfinding, Directional,
Interpretative, Park orientation



Park Signage | A City of Buffalo park signage standard was established through a grant obtained by the Buffalo Olmsted Parks Conservancy in the late 1990s. At that time a handful of park identification signs were installed throughout the entire city park system as a preliminary phase of implementation. Since that time very few additional signs have been installed and wayfinding through the Olmsted system is lacking. Several additional sign types are to be installed throughout the Olmsted Park System

including directional signage, park orientation signage, and historic and interpretive signage. Furthermore, the signs installed over 20 years ago are in desperate need of refurbishment due to fade and damage. Over the next five years, it is recommended that the signage plan and standards, as supplement to The System Plan and Five Year Plan, be scheduled for updating and amendment followed by full implementation across the Olmsted Park System.

Recreation

Keywords: Playgrounds,
Athletic fields, Pathways



Soccer / Football Fields | Several soccer/football fields throughout the Olmsted Park System have been identified as needing rehabilitation for turf quality and safety, with grading and drainage, as well as irrigation. Soccer fields in Front and Cazenovia Parks and the football field in Riverside Park have been identified specifically for rehabilitation in the next five years.

Baseball Fields | Baseball fields in Riverside and Cazenovia Parks have also been identified for rehabilitation as a part of the Five Year Plan, including fence and backstop repairs, bleacher replacement, reconstruction of pitchers' mounds, and resurfacing of infield clay, plus the regrading and drainage of outfields and facility perimeters.



Systemwide Projects Based on C.A.R.E.S.

WEST DISTRICT

Front Park

- Wayfinding and Interpretive Signage Installation
- Soccer Field Rehabilitation

Prospect Park

- Wayfinding and Interpretive Signage Installation
- Pathway Reconstruction

Days Park

- Turf Restoration



RIVERSIDE DISTRICT

Riverside Park

- Benches / Park Furnishings Installation
- Wayfinding and Interpretive Signage Installation
- Football Field Rehabilitation
- Baseball Fields Rehabilitation

DELAWARE DISTRICT

Delaware Park – Meadow

- Wayfinding and Interpretive Signage Installation
- Colvin Playground Reconstruction
- Parkside Playground Reconstruction

Delaware Park – Lake

- Wayfinding and Interpretive Signage Installation

Bidwell Parkway

- Turf Restoration



MLK JR. DISTRICT

MLK Jr. Park

- Benches / Park Furnishings Installation
- Wayfinding and Interpretive Signage Installation
- Playground Reconstruction
 - Pathway Reconstruction
- Park Lighting Improvements



SOUTH DISTRICT

Cazenovia Park

- Benches / Park Furnishings Installation
- Wayfinding and Interpretive Signage Installation
- Soccer Field Rehabilitation
- Baseball Fields Rehabilitation
- Playground Reconstruction
- Pathway Reconstruction

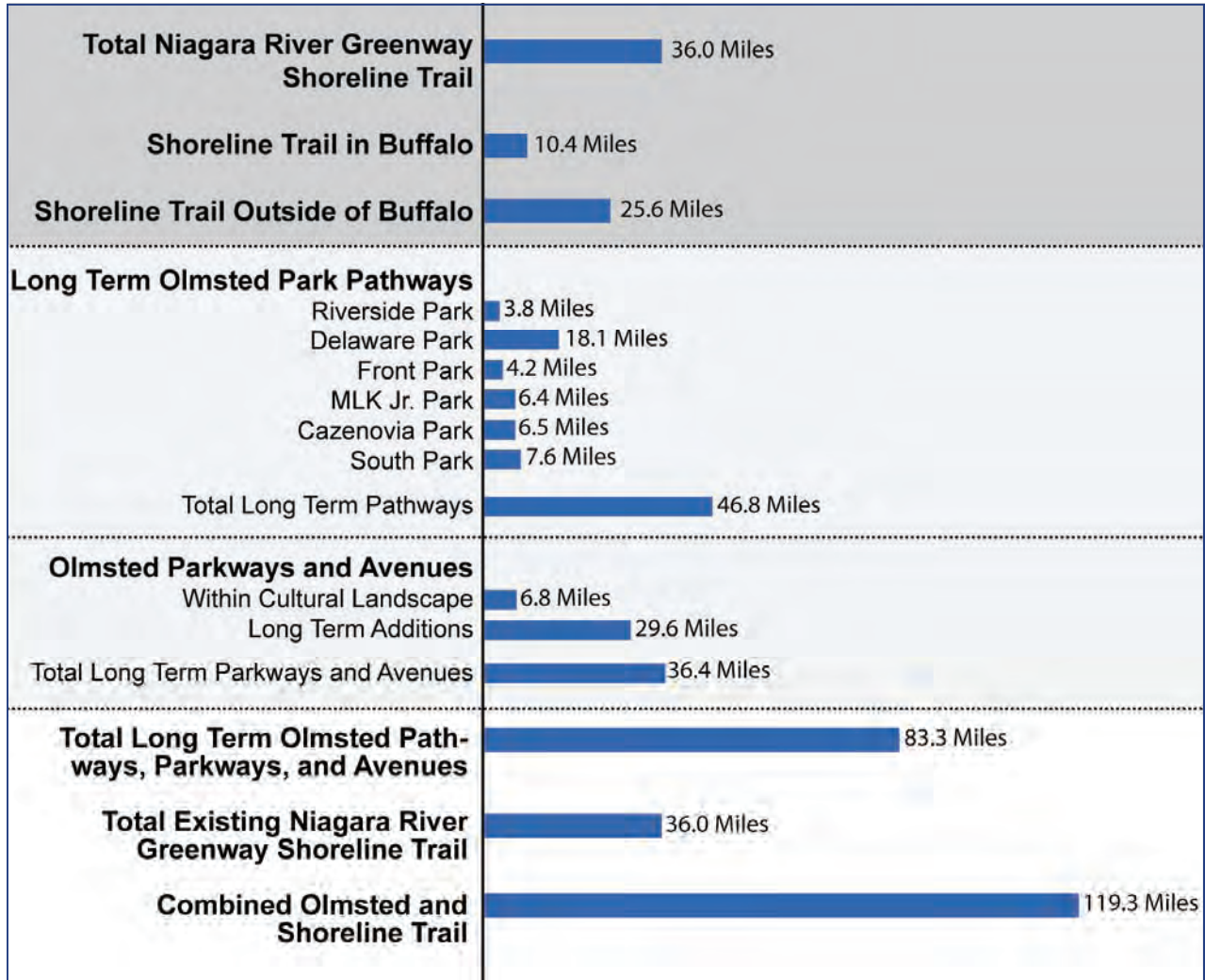
South Park

- Benches / Park Furnishings Installation
- Wayfinding and Interpretive Signage Installation
- Future Playground

McKinley and Red Jacket Parkways

- Parkway Lighting Improvements

Part Five: Niagara River Greenway and the Buffalo Olmsted Park and Parkway System



Seamlessly Connected Systems

The existing Niagara River Greenway Shoreline Trail is approximately 36 miles in length. The draft proposals in the Buffalo Olmsted Park and Parkway System 20 Year Management and Restoration Plan show the Parks having 46.8 miles of pathways in the long term. The 20 Year Plan shows the Parkway and Avenue System, with fully developed pathways, trails, sidewalks, and bike lanes, to total 36.4 miles

in the long term. Integrating the Olmsted and Greenway System expands the Niagara River Greenway Shoreline Trail approximately 83.3 miles, to a total of more than 119.3 miles of Greenway that winds through the City of Buffalo.