

AUTHORIZED OFFICIAL

Name: STEPHANIE CROCKATT Title: EXECUTIVE DIRECTOR

Business Address: PARKSIDE LODGE - 84 PARKSIDE AVE

State: NEW YORK Zip Code: 14214

Telephone Number: (716) 838-1249 X16 Cell Number: _____

Fax Number: (716) 835-1300

E-Mail Address: stephanie@bfloparks.org

PROJECT POINT OF CONTACT

Name: BRIAN DOLD Title: DIRECTOR OF PLANNING AND ADVOCACY

Organization/Firm: BUFFALO OLMSTED PARKS CONSERVANCY

Business Address: PARKSIDE LODGE - 84 PARKSIDE AVE

State: NEW YORK Zip Code: 14214

Telephone Number: (716) 280-8118 Cell Number: (716) 280-8118

Fax Number: (716) 835-1300

E-Mail Address: brian@bfloparks.org

Buffalo Olmsted Park and Parkway System
Point of the Meadow Shelter Enhancement
11/16/21

Project Narrative

The Point of the Meadow Shelter enhancement project to upgrade facilities and enhance access to a comfort facility along the Jesse Kregal pathway in Delaware Park in the City of Buffalo.

Frederick Law Olmsted was instrumental in establishing a vision, not only for Buffalo, but for the entire Niagara River corridor. Preserving and promoting the Olmsted Legacy is one of the primary principles identified in the Niagara River Greenway Plan and is core to the mission of the Buffalo Olmsted Parks Conservancy (BOPC). Delaware Park, the largest of Olmsted's designed greenspaces in Buffalo is listed on the National Register of Historic Places and the Point of the Meadow Shelter is a contributing structure to that historic significance.

In 2017 the City of Buffalo and BOPC restored the historic clay tile roof and improved pathways surrounding and leading to the shelter entrances in addition to installing wayfinding and interpretive signage. However, the interior facility remains unimproved and out of date with current ADA standards. Additionally, it is a priority of the city and BOPC to enhance seasonal restroom facilities with HVAC to increase year-round services and promote winter recreation. In 2018-2019 the BOPC conducted a community engagement process to establish park improvement priorities for the Buffalo Olmsted Parks System, enhancement for the Point of the Meadow Shelter interior was identified as a top investment priority for Delaware Park.

Enduring the Covid-19 pandemic over the last 18 months has only increased awareness of the importance of our parks, but also the importance of the design and configuration of public buildings to increase hygiene and limit the potential transference of germs. Providing safe and clean public restrooms at the Point of the Meadow Shelter is a high priority.

Enhancement of the Point of Meadow Shelter as a connective node in Delaware Park, linking the grand meadow and highly utilized ring road with Hoyt Lake and Rumsey Woods, as well as the gateways to the Jesse Kregal Pathway along the Scjajaquada Corridor, the Shoreline Trail and Niagara Corridor will be a tremendous benefit to the Niagara River Greenway by providing safe and comfortable services that enhance every recreation experience.

Principles of the Niagara River Greenway Plan

- Excellence – every project undertaken by the Buffalo Olmsted Parks Conservancy is done with excellence. Within the scope of the project the BOPC would be securing a professional project team and utilizing only the best in construction materials and methods in completing construction.

- Sustainability / Ecological Integrity – the project would be executed with the agreed upon best practices in managing the landscape. The Buffalo Olmsted Parks Conservancy has a commitment to sustainable practices.
- Accessibility / Connectivity – this project’s purpose and impact will be the increased public accessibility to comfort facilities along the Jesse Kregal Pathway in Delaware Park, enhancing the greenway user experience.
- Public Well-Being – the project is an important investment in a strong working-class community building on many existing environmental and healthy living assets and ensuring their viability for future generations.
- Restoration – this principle represents the cornerstone of *The Buffalo Olmsted Parks System: Plan for the 21st Century*, as one of the 7 Guiding Principles, and is in the forefront of the Conservancy’s mission. This project enhances a key feature in Delaware Park.
- Authenticity / Celebration – The investment significant features of our Olmsted Park and Parkway System is a celebration of Olmsted’s legacy ensuring future generations are provided high quality Olmsted park experiences.
- Partnerships/ Community based – In 2018-2019 the BOPC worked extensively with both the City of Buffalo and the local community stakeholders in developing an updated park improvement priorities plan; the Five-Year Plan. Improved restroom facilities at the Point of the Meadow in Delaware Park was identified as a priority through that public engagement process.

Project Budget:

Planning	\$ 42,000
Construction	\$ 306,000
Acquisition	\$ 0
Administration	\$ 17,500
Operation and Maintenance / Year*	\$ 44,000
TOTAL PROJECT COST	\$ 409,500

** The Buffalo Olmsted Park System is operated and maintained by the BOPC through contractual agreement, by the Buffalo Olmsted Parks Conservancy through the City of Buffalo, however initial maintenance funding is required.*

The Buffalo Olmsted Parks Conservancy’s goals for its contribution to the Greenway has been incorporated into the development of the *Buffalo Olmsted Parks System Plan for the 21st Century*. The *21st Century Plan*, published in 2008, looks to place the park system within the green infrastructure of the city, restoring and building off of the assets brought to the region over the decades.

The 2008 master planning process included 21 meetings comprised of representatives from a broad group of community organizations and park users whose main purpose was to encourage and facilitate public participation in the planning process. During this period six public meetings were held

throughout the city as well as 15 meetings of the BOPC Long Range Planning Committee of the Board of Trustees, who approved the master plan.

In 2018-2019 the BOPC undertook an extensive community engagement process to update park improvement priorities of the Plan for the 21st Century; a Five-Year Plan update. This included three rounds of community meetings across five park districts in addition to an online survey responded to by over 1100 residents. The final report, published in November 2019, was fully vetted with the City of Buffalo Department of Public Works and ratified as approved by the BOPC Board of Trustees.

Final design plans will be developed as a part of this project and will be vetted with the City of Buffalo Department of Public Works and the community, prior to construction. Following the implementation of this shelter restoration project the BOPC will continue to engage residents on volunteer projects and other enhancements. The BOPC, as a part of our ongoing role as park stewards, will work through a newly established park-user engagement entity, the Olmsted Community Alliance.

The Point of the Meadow Shelter enhancement project will comply with all SEQRA regulations relevant to the project. All necessary studies of existing conditions will be a part of the initial technical site analysis phase of the project.

Project Schedule:

Summer 2022

- Design / Construction Drawings

Winter 2022

- Bid / Construction Contract

Spring 2023 – Summer 2024

- Construction
- Project Close Out

BUFFALO OLMSTED PARKS SYSTEM



RIVERSIDE PARK

DELAWARE PARK
POINT of the MEADOW

MLK JR
PARK

FRONT PARK

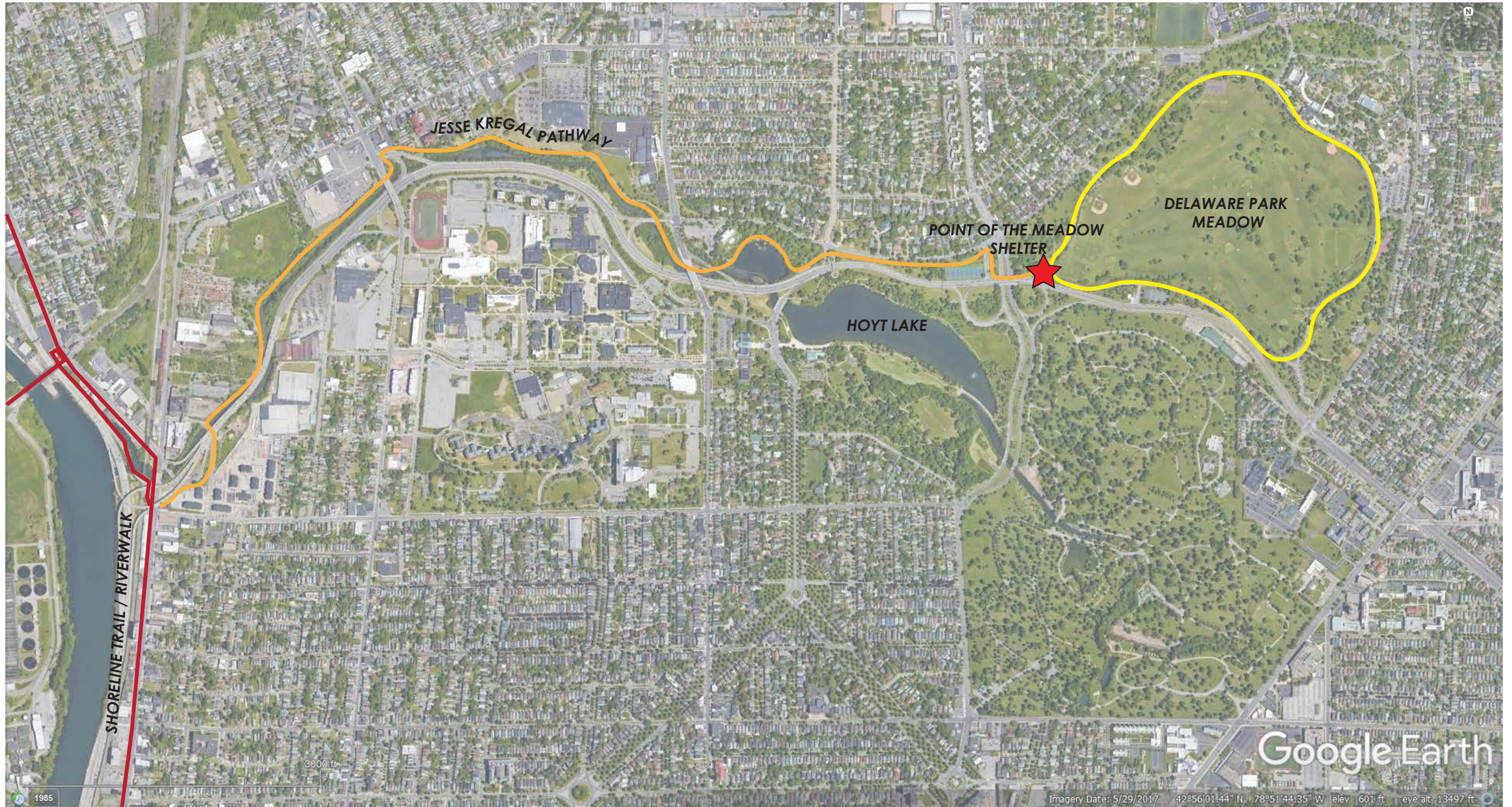
CAZENOVIA PARK

SOUTH
PARK

Image © 2021 TerraMetrics
Image NOAA

42.49555

POINT OF THE MEADOW - CONTEXT MAP



Google Earth

Imagery Date: 5/29/2017 42°56'01.44" N 78°51'44.35" W elev. 601 ft eye alt. 13497 ft

1985

3000 ft

POINT OF THE MEADOW - SITE MAP



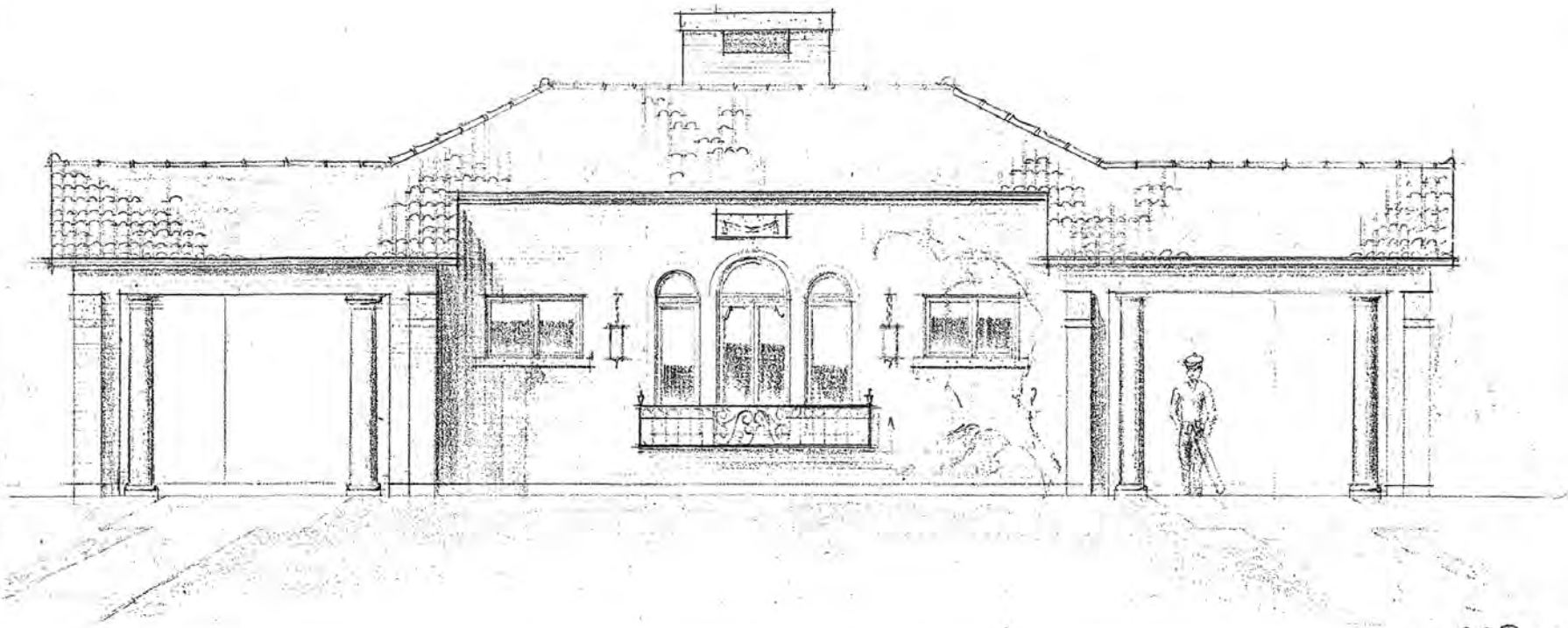
JESSE KREGAL PATH

DELAWARE PARK
MEADOW

RING ROAD

100 ft

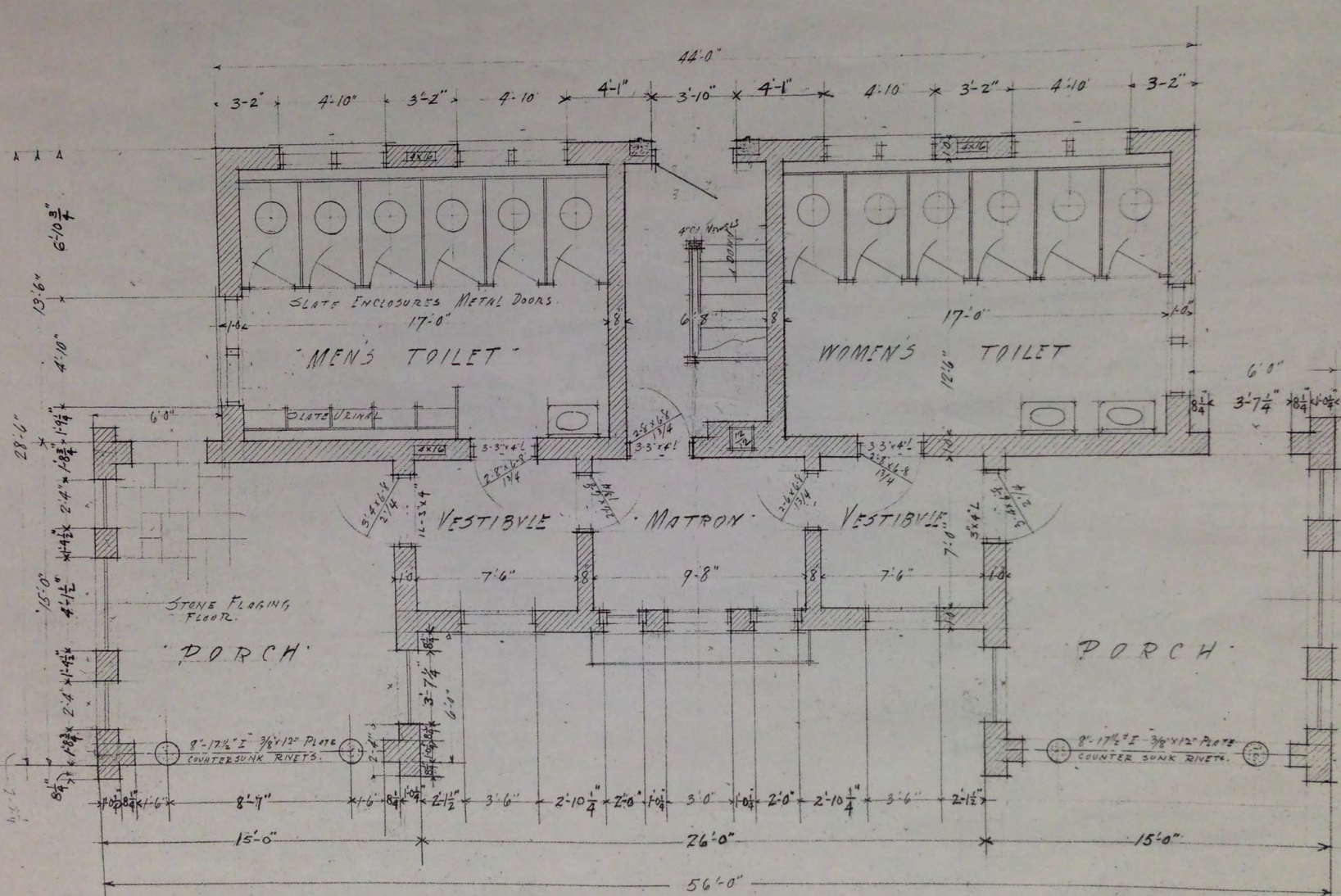
POINT OF MEADOW – FRONT ELEVATION



C.A. PORTN

FRONT ELEVATION
SCALE 1/4" = 1'-0"

POINT OF MEADOW - FLOOR PLAN



FIRST FLOOR PLAN
SCALE 1/4" = 1'-0"



POINT OF MEADOW











The Olmsted City

The Buffalo Olmsted Park System:
Plan for the 21st Century



BUFFALO
OLMSTED PARKS
CONSERVANCY

The Olmsted City

The Buffalo Olmsted Park System:
Plan for the 21st Century



BUFFALO
OLMSTED PARKS
CONSERVANCY

Thomas Herrera-Mishler,
CHIEF EXECUTIVE OFFICER
WWW.BUFFALOOLMSTEDPARKS.ORG



Byron W. Brown,
MAYOR
WWW.CITY-BUFFALO.COM



Chris Collins,
COUNTY EXECUTIVE
WWW.ERIE.GOV

January 2008

The Olmsted City

The Buffalo Olmsted Park System: Plan for the 21st Century

Edited by Robert G. Shibley and Lynda H. Schneekloth

DEVELOPED UNDER THE DIRECTION OF:

Buffalo Olmsted Parks Conservancy
City of Buffalo
County of Erie

DEVELOPED WITH THE CONSULTING SUPPORT OF:

The Urban Design Project, University at Buffalo, State University of New York

WITH

Trowbridge and Wolf, Landscape Architects
Wendel Duchscherer, Architects and Engineers

WITH ADDITIONAL SUPPORT FROM:

The Center for Computation Research, University at Buffalo, State University of New York
Greater Buffalo Niagara Regional Transportation Council
Delaware North Companies Parks & Resorts

WITH GENEROUS FUNDING FROM:

The John R. Oishei Foundation

WITH ADDITIONAL FUNDING FROM:

Baird Foundation
Community Foundation for Greater Buffalo
Former Erie County Legislator Judy Fisher
Paul and Niscah Koessler
Erie County Legislator Lynn Marinelli
Corinne and Victor Rice

Jake Schneider, Schneider Design Architects
Watson, Bennett, Colligan, Johnson & Schechter, LLP
Margaret L. Wendt Foundation
City of Buffalo
County of Erie

On January 31, 2003, the Mayor of Buffalo declared the city to be "The Olmsted City"

FRONT COVER IMAGE:

The White Oak Tree in the Delaware Park Meadow

BACK COVER IMAGE:

The Humboldt Basin in Martin Luther King, Jr. Park from the Buffalo and Erie County Historical Society image collection

The Urban Design Project
School of Architecture and Planning



University at Buffalo
The State University of New York

The Urban Design Project
School of Architecture and Planning
University at Buffalo,
State University of New York
3435 Main Street
Buffalo, NY 14214
(716) 829-3485 ext 218
www.urbandesignproject.org

The System Plan was completed by The Urban Design Project, School of Architecture and Planning, University at Buffalo, under the guidance of the Long Range Planning Committee and the Olmsted Advisory Council of the Buffalo Olmsted Parks Conservancy. The proposed designs build on the history of planning for the parks. Past plans commissioned by the City of Buffalo were supplemented by team and client charrettes and subsequent design development with community input. Cost estimating was done by Wendel Duchscherer, final artist renderings of the park plans were prepared by Trowbridge and Wolf, and system graphics were prepared by The Urban Design Project. All other graphics in the report without sources are from The Urban Design Project or the Buffalo Olmsted Parks Conservancy.

—RESTORATION PLAN— DELAWARE PARK

RECONNECT THE FRAGMENTS OF THE PARK

Project #1: Support and participate in the upgrade of the Scajaquada Expressway to a parkway

RESTORE THE HISTORIC INTEGRITY OF THE PARK FROM THE PERIOD OF SIGNIFICANCE

- Project #2: Restore the Meadow
- Project #3: Reconstruct the Ring Road considering its historic alignment
- Project #4: Restore the Lodge area
- Project #5: Restore the Casino area
- Project #6: Restore the Rumsey Woods area

RESTORE GALA WATER AND OTHER WATER FEATURES

- Project #7: Restore or interpret the original shoreline configuration and redesign the path around Gala Water (Hoyt Lake) to reflect the new shape
- Project #8: Construct a wetland to improve water quality at the junction of Hoyt Lake and Scajaquada Creek

IMPROVE OR RATIONALIZE RECREATION AND SERVICES

- Project #9: Enhance the playgrounds
- Project #10: Reposition the baseball diamonds and rotate athletic fields
- Project #11: Provide water based recreation opportunities on Hoyt Lake
- Project #12: Remove the tennis courts along the Scajaquada Expressway (in the southern part of the Meadow) and improve other tennis courts in the park

IMPROVE ACCESS AND CIRCULATION WITHIN THE PARK FOR VEHICLES AND PEDESTRIANS

- Project #13: Improve connections to cultural activities within the park

ESTABLISH CONNECTIONS TO AREAS SURROUNDING THE PARK

- *Project #14: Connect the park's perimeter to the surrounding neighborhood
- *Project #15: Highlight the park's connections to the "Olmsted Crescent" of cultural activities
- *Project #16: Explore opportunities to connect Delaware Park to Forest Lawn Cemetery
- *Project #17: Connect the park to the Niagara River Greenway
- *Project #18: Restore park perimeter roads to create more of a park-like setting in the surrounding neighborhoods

RESTORE THE BASIC PARK ELEMENTS

- *Project #19: Restore the park's historic furnishings
- *Project #20: Identify areas in need of lighting; design and install lighting
- *Project #21: Restore and maintain public restroom facilities
- *Project #22: Restore, maintain, or install drinking fountains
- *Project #23: Rehabilitate Olmsted pathway system
- *Project #24: Rehabilitate Olmsted roadway system
- *Project #25: Introduce traffic calming measures at park roads
- *Project #26: Install appropriate wayfinding and branding signage
- *Project #27: Restore historic landscape patterns and plantings, especially perimeter vegetation
- *Project #28: Manage drainage and erosion issues throughout the park

*These projects are not numbered on the map.



BUFFALO, NY



ERIE COUNTY



The Olmsted City

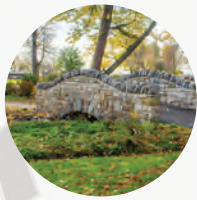
FIVE YEAR PLAN

2020 – 2024

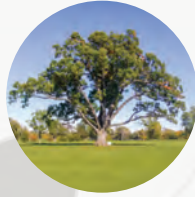
PRIORITIES FOR BUFFALO'S
OLMSTED PARK SYSTEM



BUFFALO
OLMSTED PARKS
CONSERVANCY



Riverside Park



Delaware Park



Front Park



MLK Jr. Park



Cazenovia Park



South Park

CANADA

Niagara River

Lake Erie

Niagara Street
I-190

Rte 198

Lincoln Parkway

Bidwell Parkway

Colonial Circle

Elmwood Avenue

Delaware Avenue

Main Street

Boiley Avenue

Rte 33

Rte 198

Richmond Avenue

Porter Avenue

Niagara Street
I-190

North Street

Rte 33

Downtown Buffalo

Genesee Street

Broadway

William Street

Clinton Street

I-190

Buffalo River

Rte 5

South Park Avenue

Heacock Place

Red Jacket Parkway

McClellan Circle

McKinley Parkway

McKinley Circle

N



SYSTEM MAP LEGEND

- Olmsted Circle
- Olmsted Parkway
- ▲ Olmsted Pocket Park

The Olmsted City

FIVE YEAR PLAN

2020 – 2024

PRIORITIES FOR BUFFALO'S
OLMSTED PARK SYSTEM

Developed with the consulting support of:



With generous funding from:



In partnership with:



MAYOR BYRON W. BROWN

October 2019

*Cover photo by Christopher Hyzy, featuring an aerial view of
Soldiers Circle and Bidwell, Chapin and Lincoln Parkways*

FIVE YEAR PLAN PRIORITY PROJECTS 2020 – 2024

Delaware District – Meadow



Systemwide Project
(Based on C.A.R.E.S.)

Park-Specific Project



Point of the Meadow Restrooms Rehabilitation*



Perimeter Woodland Regeneration (Managed Meadow Area)



Colvin Playground Reconstruction



Parkside Playground Reconstruction



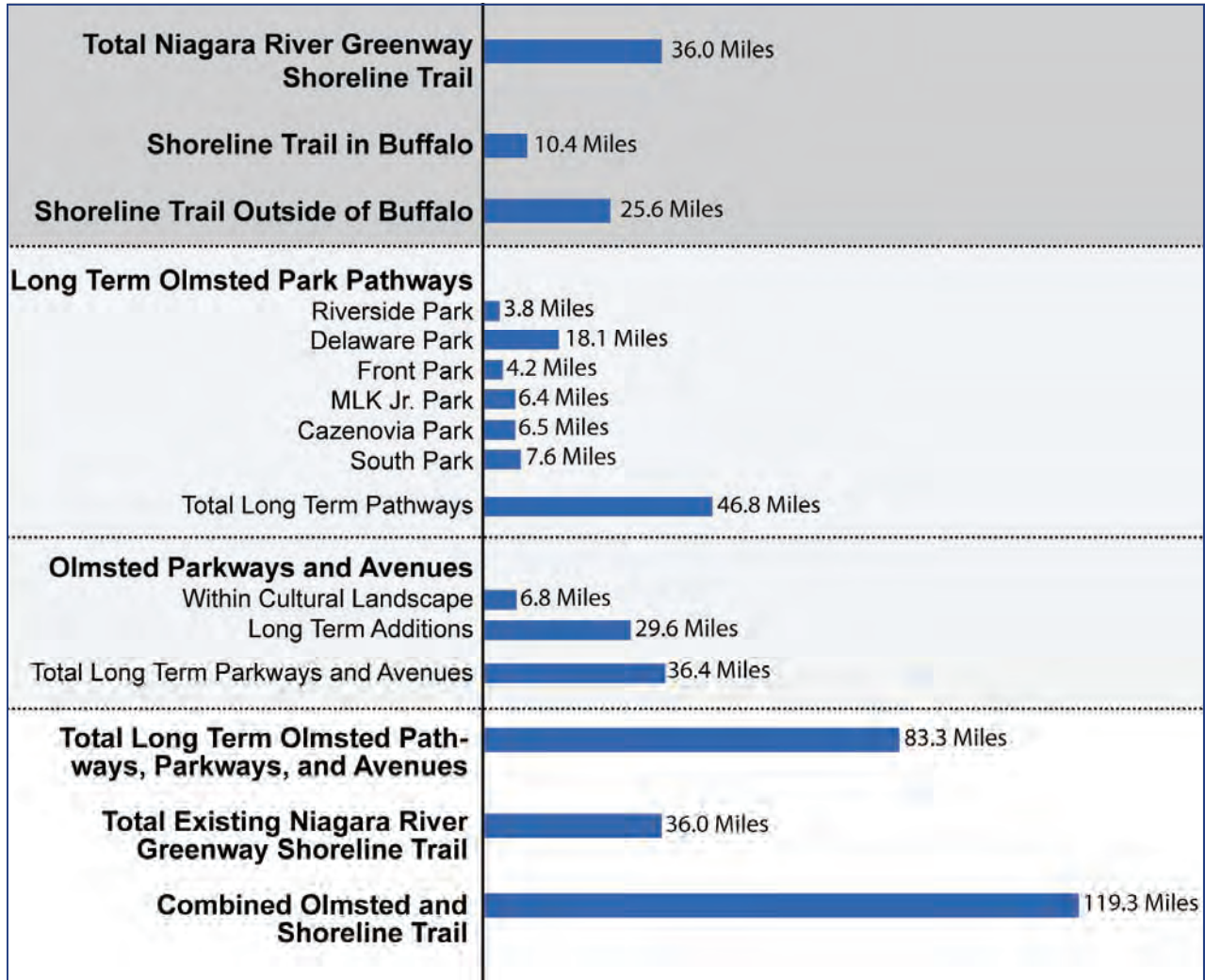
Parkside Lodge Renovations*

Other Systemwide Projects – DELAWARE PARK MEADOW

- Wayfinding and Interpretive Signage Installation

* Final project scope and investment for 5YP to be based on facilities assessment

Part Five: Niagara River Greenway and the Buffalo Olmsted Park and Parkway System



Seamlessly Connected Systems

The existing Niagara River Greenway Shoreline Trail is approximately 36 miles in length. The draft proposals in the Buffalo Olmsted Park and Parkway System 20 Year Management and Restoration Plan show the Parks having 46.8 miles of pathways in the long term. The 20 Year Plan shows the Parkway and Avenue System, with fully developed pathways, trails, sidewalks, and bike lanes, to total 36.4 miles

in the long term. Integrating the Olmsted and Greenway System expands the Niagara River Greenway Shoreline Trail approximately 83.3 miles, to a total of more than 119.3 miles of Greenway that winds through the City of Buffalo.